

# ► Table of Contents

<b>TABLE OF CONTENTS</b> .....	<b>1</b>
SOURCE OF DATA .....	2
DEFINITION OF TERMS .....	3
State of Florida Summary .....	4
FLORIDA TRAFFIC TRENDS .....	6
<b>WHEN CRASHES OCCUR</b> .....	<b>7-10</b>
TRAFFIC CRASHES BY MONTH .....	7
CRASHES BY DAY OF WEEK .....	8
CRASHES BY TIME OF DAY .....	9
HOLIDAY TRAFFIC FATALITIES .....	10
<b>PERSONS INVOLVED IN CRASHES</b> .....	<b>11-20</b>
SEX OF DRIVERS IN CRASHES .....	11
AGE OF DRIVERS IN CRASHES .....	12
Selected Age Groups* .....	13
SAFETY EQUIPMENT USE* .....	14
CHILD SAFETY RESTRAINT USE .....	15
MOTORCYCLIST FATALITY TRENDS .....	16
BICYCLIST FATALITY TREND .....	17
PEDESTRIAN FATALITY TRENDS .....	18
PEDESTRIAN CRASH RATES .....	19
PEDESTRIAN BEHAVIOR IN CRASHES .....	20
<b>CAUSAL FACTORS IN CRASHES</b> .....	<b>21-23</b>
CONTRIBUTING CAUSES .....	21
ALCOHOL-RELATED CRASH TRENDS .....	22
ALCOHOL AND DRUG USE .....	23
<b>COUNTY/CITY DATA</b> .....	<b>24-32</b>
FATALITY TREND BY COUNTY .....	25
CRASH TREND BY COUNTY .....	26
ALCOHOL-RELATED FATALITIES BY COUNTY .....	27
Alcohol-Related Crashes by County .....	28
ALCOHOL-RELATED CRASHES BY CITY .....	29

The information contained in this Traffic Crash Facts booklet is extracted from law enforcement agency long-form reports of traffic crashes. A law enforcement officer must submit a long-form crash report when investigating:

Motor vehicle crashes resulting in death or personal injury, or

Motor vehicle crashes in which one or more of the following conditions occur:

Leaving the scene involving damage to an attended vehicle or property (Section 316.061 (1), F.S.);

Driving while under the influence of alcoholic beverages, chemical substances, or controlled substances or with unlawful blood alcohol level (Section 316.193, F.S.).

An investigating officer *may* report other traffic crashes on the long-form. In particular, applicable statutes specify an officer's discretion to submit a long-form report in crashes where a vehicle is rendered inoperable to the degree that a wrecker is required to remove it from traffic.

Statutory revisions in 1983 and 1989 had the effect of reducing the number of non-injury crashes required to be reported to the Department. Any presentation of historical data that includes such crashes, such as total traffic crash counts, will reflect these changes. Data on traffic crashes involving death, injury, or other criteria for law enforcement long-form reports as outlined above are not affected.

Please note:

All 1992 data in this publication have been updated from preliminary figures published in the Department of Highway Safety and Motor Vehicles *Traffic Crash Data, 1992*. Figures from the 1992 publication should not be used for year-to-year comparisons.

The following terms are defined as they apply to the crash data presented in this publication. These definitions may differ from legal or other uses of the same terms.

- Alcohol-related traffic crash-** A crash involving a driver and/or pedestrian for whom alcohol use was reported (does not presume intoxication).
- Bicycle-** A vehicle propelled solely by human power or a motorized bicycle propelled by a combination of human power and an electric helper motor rated at not more than 200 watts (this term does not include a vehicle with a seat height of no more than 25 inches from the ground when the seat is adjusted to its highest position, or a scooter or similar device).
- Bicyclist-** The driver of a bicycle. A passenger on a bicycle is considered a vehicle passenger.
- Driver-** Unless otherwise indicated, the operator of a motor vehicle or bicycle. Driver data typically exclude uninjured persons presumed to have been operating hit-and-run, phantom, or properly parked vehicles.
- Fatal traffic crash-** A traffic crash that results in one or more fatalities within ninety days of occurrence.
- Moped-** A motor-powered cycle with a pedal-activated motor and 2 brake horse-power maximum.
- Motor vehicle-** Any motorized vehicle not operating on rails.
- Motorcycle-** A motor vehicle, with a seat or saddle for the driver's use, traveling with no more than three wheels in contact with the ground, excluding a tractor or a moped.
- Motorcyclist-** The driver of a motorcycle. A passenger on a motorcycle is considered a vehicle passenger.
- Traffic crash-** A crash involving at least one motor vehicle on a trafficway that is open to the public. The term "crash" in this publication is equivalent to the term "accident" as used in previous editions and standard summary tables.
- Traffic fatality-** The death of a person as a direct result of a traffic crash within ninety days of the crash occurrence.
- Vehicle occupant-** Drivers and passengers of automobiles, vans, trucks, buses, and motor homes.

## ALL CRASHES

Compared to 1994, there was a 10.9% increase in traffic crashes investigated and reported.

Traffic crashes .....	228,589
Drivers involved .....	365,111
Average crashes per day .....	626

## FATAL CRASHES AND FATALITIES

Compared to 1994, there was a 4.6% increase in traffic fatalities.

Fatalities .....	2,847
Fatal crashes .....	2,586

## INJURY CRASHES

Compared to 1994, there was a 4.7% increase in traffic injuries.

Injuries .....	233,900
Injury crashes .....	143,839

## ALCOHOL-RELATED CRASHES AND FATALITIES

37.7% of traffic fatalities and 10.9% of traffic crashes were alcohol-related.

Alcohol-related fatalities .....	1,073
Alcohol-related injuries .....	22,409
Alcohol-related crashes .....	24,873
Alcohol-related fatal crashes .....	972
Alcohol-related injury crashes .....	13,545

## CRASH ENVIRONMENTS

59.2% of all crashes occurred in primarily business areas, while 59.7% of fatal crashes were in open country or residential areas.

Crashes in Business Areas .....	135,436
Crashes in Residential Areas .....	68,842
Crashes in Open Country .....	24,311
Fatal Crashes in Business Areas .....	1,042
Fatal Crashes in Residential Areas .....	740
Fatal Crashes in Open Country .....	804

## SAFETY EQUIPMENT

80.8% of motor vehicle occupants, bicyclists, and motorcyclists involved in crashes were reported using safety equipment, while 19.0% were reported not using safety equipment. Safety equipment use was not reported for 0.2%.

Vehicle Occupants Using Safety Belts .....	432,111
Vehicle Occupants Using Child Safety Seats .....	10,728
Vehicle Occupants Using Air Bags (Only) .....	1,488
Vehicle Occupants Not Using Safety Equipment.....	97,445
Bicyclists with Safety Helmet .....	374
Bicyclists without Safety Helmet .....	7,007
Motorcyclists with Safety Helmet .....	3,616
Motorcyclists without Safety Helmet .....	1,171
Safety Equipment Use Not Stated .....	1,083

## PEDESTRIAN CRASHES

19.8% of all traffic fatalities were pedestrians.

Pedestrians killed .....	564
Pedestrians injured .....	8,035
Pedestrian crashes (by First Harmful Event) .....	7,379

## BICYCLE CRASHES

4.8% of all traffic fatalities were bicycle drivers.

Bicycle drivers killed .....	137
Bicycle drivers injured .....	6,757
Bicycle crashes (by First Harmful Event) .....	5,590

## MOTORCYCLE CRASHES

5.8% of all traffic fatalities were motorcycle drivers.

Motorcyclists killed .....	164
Motorcyclists injured .....	4,181

YEAR	LICENSED DRIVERS	REGISTERED VEHICLES	VEHICLE MILES*	CRASHES	NON-FATAL INJURIES	DEATHS	MILEAGE DEATH RATE**
1976	6,384,149	7,217,926	64,492	270,659	152,375	2,015	3.1
1977	6,607,213	7,845,529	67,007	284,965	160,096	2,066	3.1
1978	6,915,219	8,079,308	71,437	326,119	181,019	2,305	3.2
1979	7,341,081	7,724,148	74,651	343,542	190,697	2,635	3.5
1980	7,809,423	7,797,375	75,281	357,720	201,385	2,879	3.8
1981	8,222,403	7,887,881	76,146	368,766	205,437	3,119	4.1
1982	8,598,019	8,622,549	79,497	361,312	195,834	2,710	3.4
1983	8,987,493	9,064,490	81,775	384,614	194,791	2,729	3.3
1984	9,442,763	9,444,964	85,241	237,511	202,889	2,856	3.4
1985	9,630,975	10,827,693	88,057	250,412	216,596	2,870	3.3
1986	9,924,110	11,651,253	87,325	242,381	219,352	2,874	3.3
1987	10,241,063	11,738,273	92,865	240,429	215,886	2,891	3.1
1988	10,648,019	11,997,948	105,030	256,543	230,738	3,152	3.0
1989	11,109,288	12,276,272	108,876	252,439	230,060	3,033	2.8
1990	11,612,402	12,465,790	109,997	216,245	214,208	2,951	2.7
1991	12,170,821	11,184,146 <sup>†</sup>	113,484	195,312	195,122	2,523	2.2
1992	11,550,126 <sup>†</sup>	11,205,298	114,000	196,176	205,432	2,480	2.2
1993	11,767,409	11,159,938	119,768	199,039	212,454	2,719	2.3
1994	11,992,578	11,393,982	120,929	206,183	223,458	2,722	2.3
1995	12,019,156	12,062,731	127,800	228,589	233,900	2,847	2.2

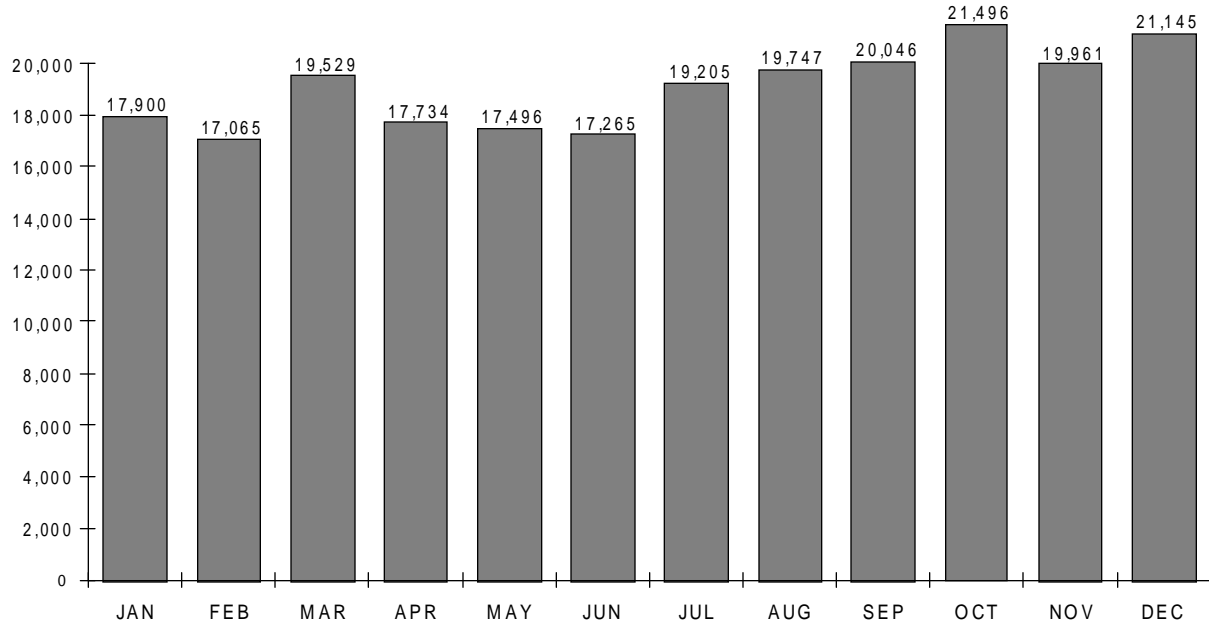
\* IN MILLIONS

\*\* PER 100 MILLION VEHICLE MILES OF TRAVEL

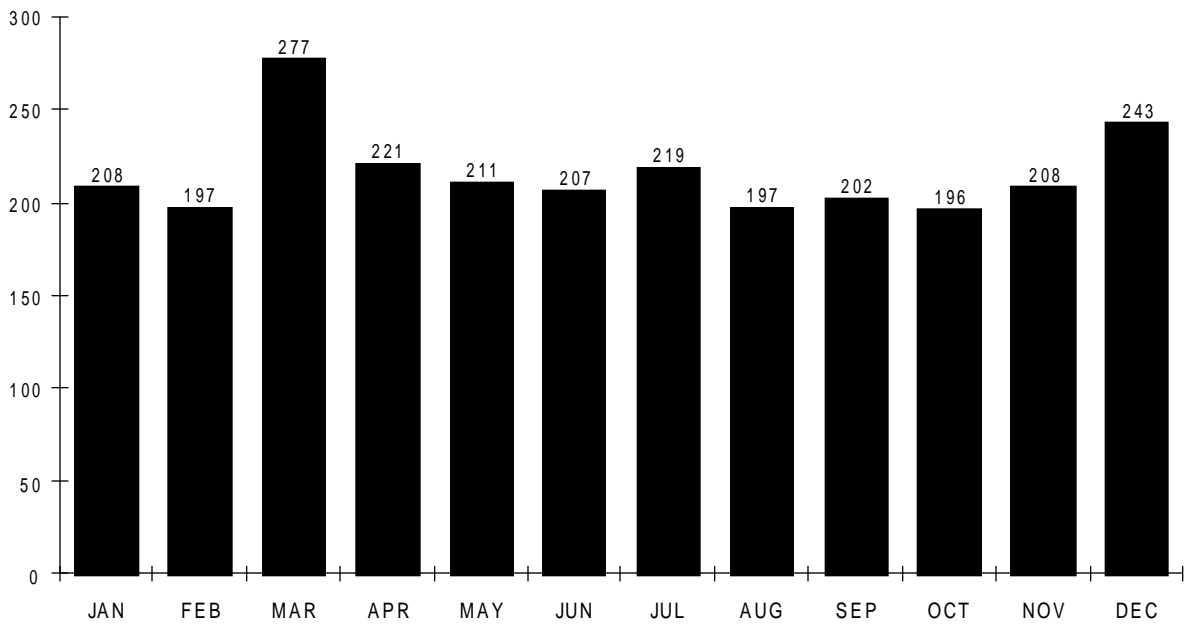
† DECREASE REFLECTS CHANGE IN ACCOUNTING METHOD

# ► Traffic Crashes by Month

## ALL CRASHES

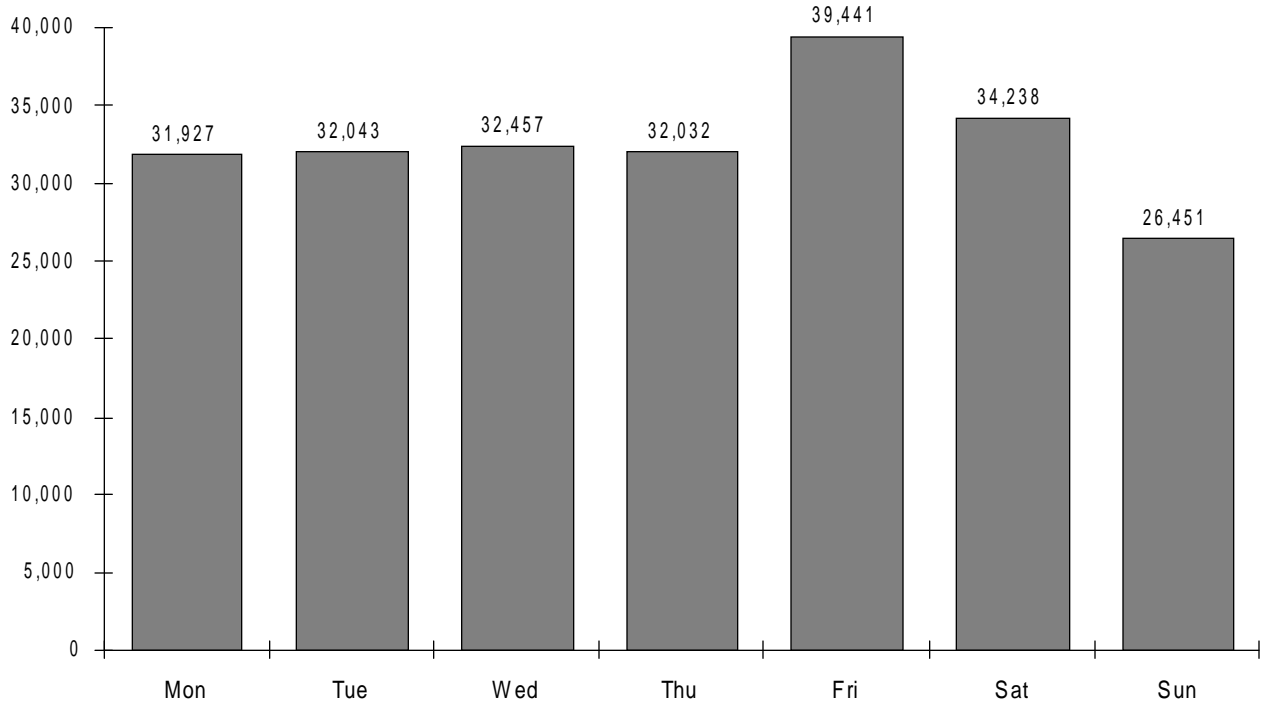


## FATAL CRASHES

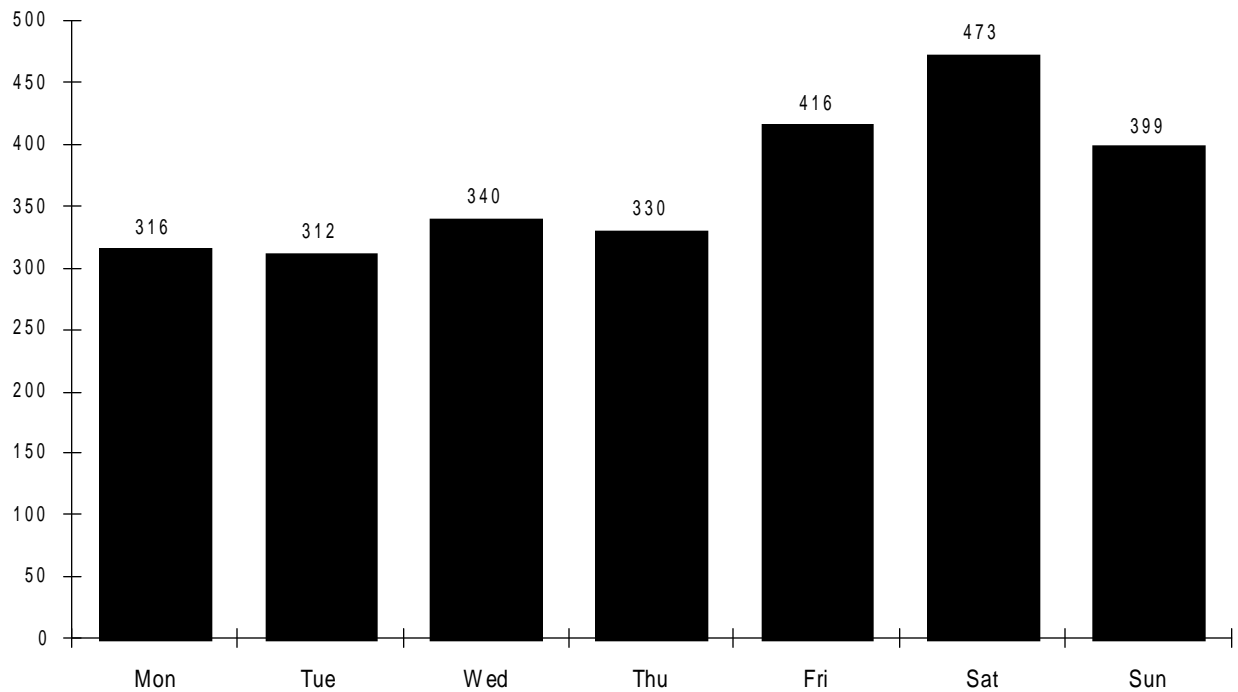


# ▶ Crashes by Day of Week

## ALL CRASHES



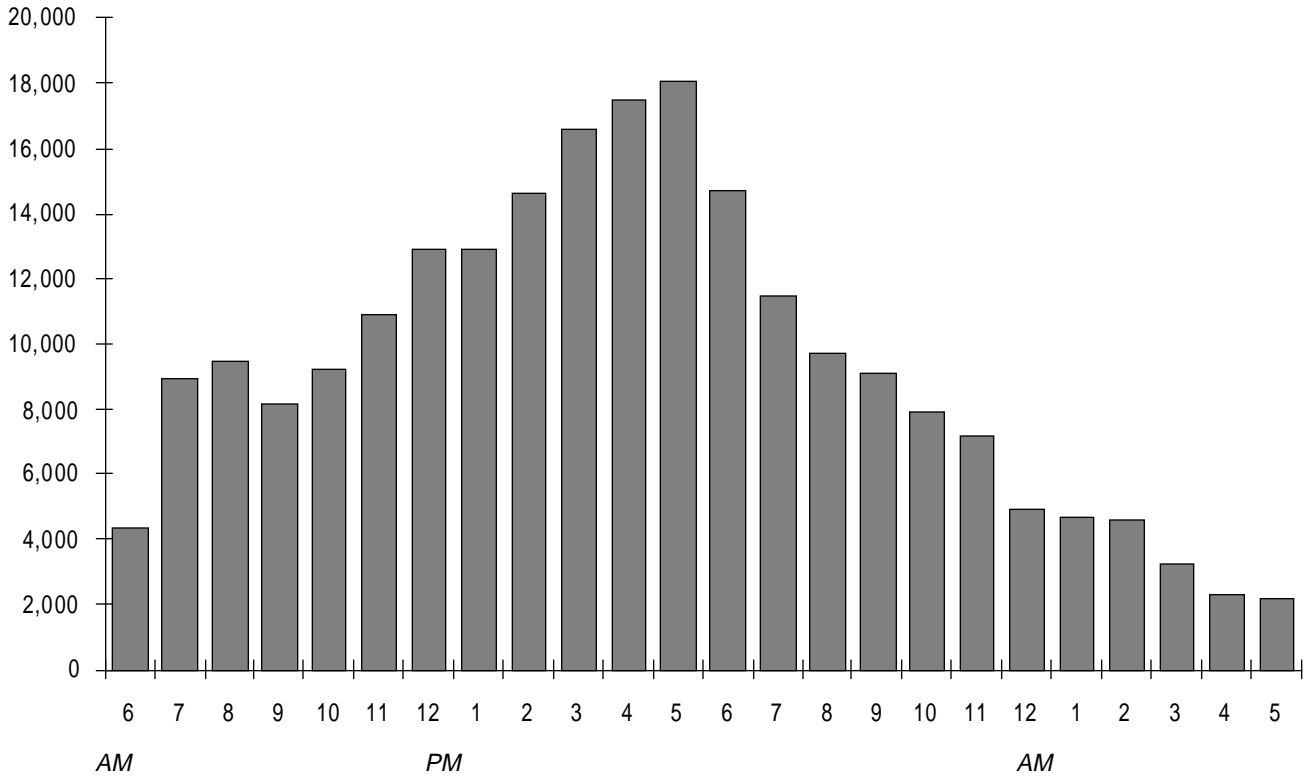
## FATAL CRASHES



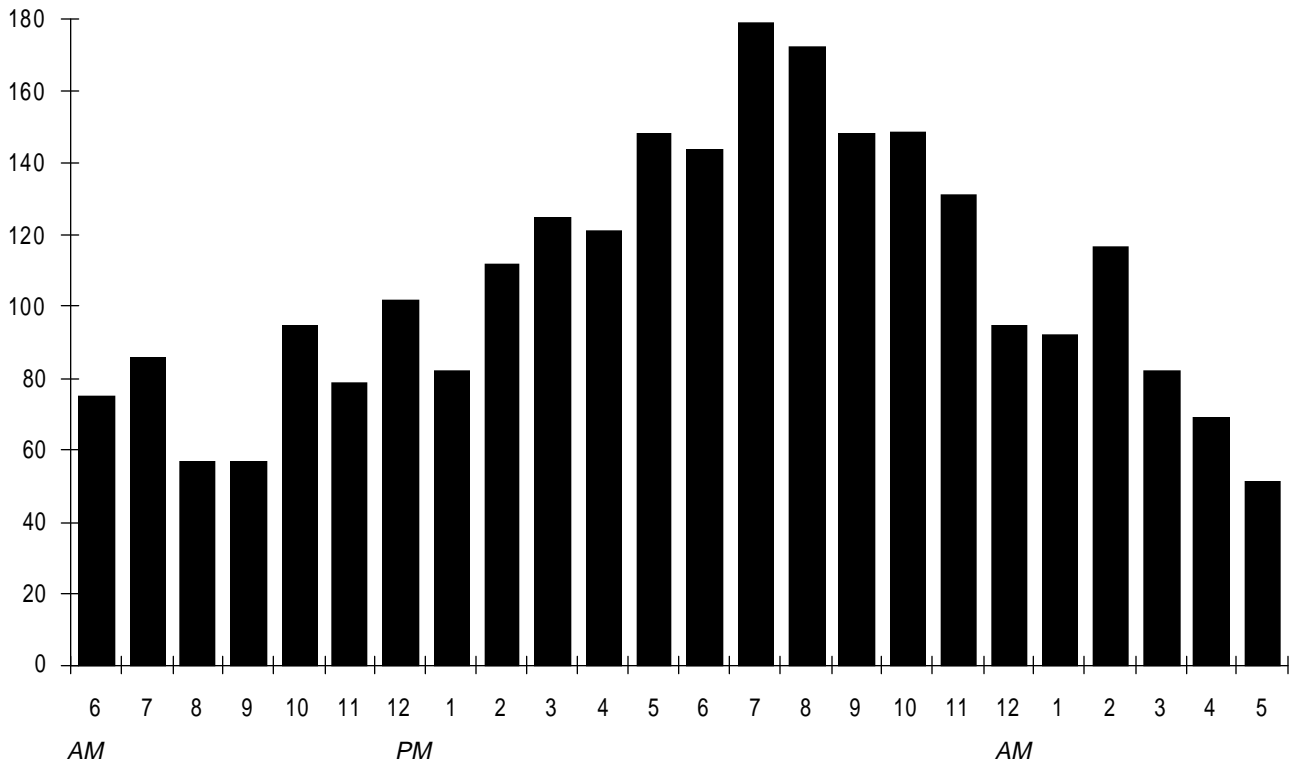


# ▶ Crashes by Time of Day

**ALL CRASHES**



**FATAL CRASHES**



# ► Holiday Traffic Fatalities

Florida Traffic  
Crash Facts 1995

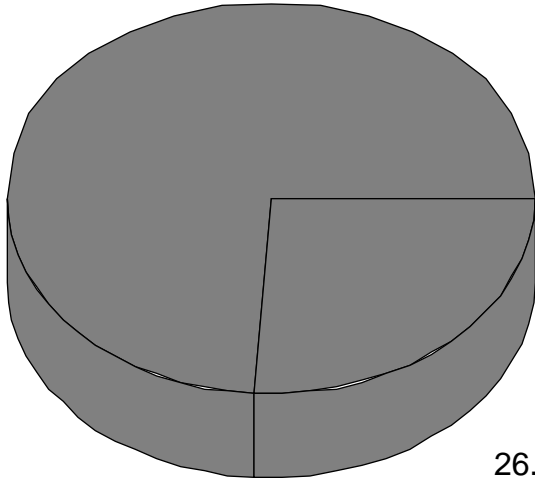
HOLIDAY PERIOD		1992	1993	1994	1995**
<b>New Year</b>	HOURS	54	102	78	78
	FATALITIES	7	35	29	21
	RATE*	.13	.34	.37	.27
<b>Memorial Day</b>	HOURS	78	78	78	96
	FATALITIES	32	24	24	35
	RATE*	.41	.31	.31	.36
<b>Independence Day</b>	HOURS	78	78	78	120
	FATALITIES	21	30	28	49
	RATE*	.27	.38	.36	.41
<b>Labor Day</b>	HOURS	78	78	78	96
	FATALITIES	36	30	28	34
	RATE*	.46	.38	.36	.35
<b>Thanksgiving</b>	HOURS	102	102	102	120
	FATALITIES	20	39	39	42
	RATE*	.20	.38	.38	.35
<b>Christmas</b>	HOURS	102	78	78	96
	FATALITIES	43	33	37	29
	RATE*	.42	.42	.47	.30
<b>All Days in Year</b>	HOURS	8,784	8,760	8,760	8,760
	FATALITIES	2,480	2,719	2,722	2,847
	RATE*	.28	.31	.31	.33

\*FATALITIES PER HOUR

\*\*1995 HOLIDAY PERIODS AFTER NEW YEAR'S BEGIN WITH A FULL DAY.  
OTHER YEARS' HOLIDAY PERIODS BEGIN 6:00 PM THE FIRST DAY.

# ► Sex of Drivers in Crashes

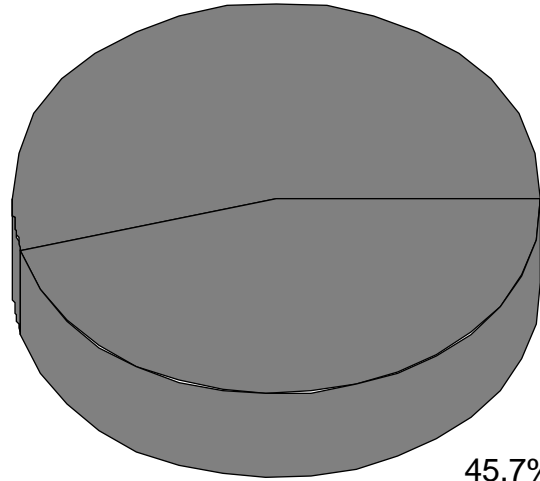
MALE  
74.0%



26.0%  
FEMALE

***DRIVERS KILLED***

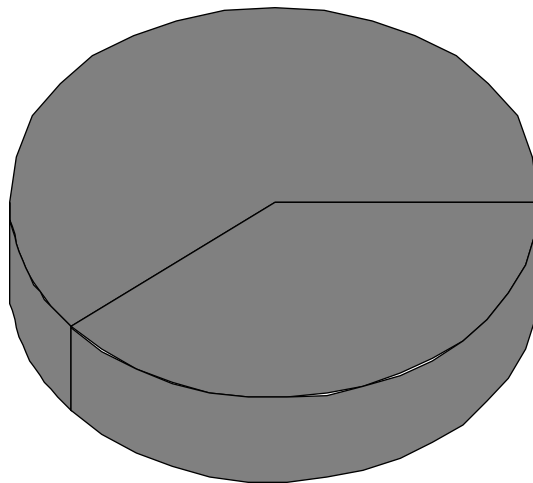
MALE  
54.3%



45.7%  
FEMALE

***DRIVERS INJURED***

MALE  
61.0%



39.0%  
FEMALE

***DRIVERS IN ALL CRASHES***

Note: Charts do not include drivers whose sex was not stated.

## FLORIDA RESIDENT DRIVERS IN ALL CRASHES BY AGE

	DRIVER LICENSES ISSUED	PERCENT	IN ALL CRASHES	PERCENT	DRINKING DRIVERS	PERCENT
UNDER 15	0	0.00%	2,569	0.74%	21	0.11%
15 TO 19	562,370	4.68%	37,995	10.93%	946	4.89%
20 TO 24	989,090	8.23%	46,789	13.46%	2,863	14.81%
25 TO 29	1,226,613	10.21%	42,868	12.33%	2,958	15.30%
30 TO 34	1,384,384	11.52%	43,445	12.50%	3,247	16.79%
35 TO 39	1,337,162	11.13%	38,622	11.11%	3,014	15.59%
40 TO 44	1,171,904	9.75%	30,486	8.77%	2,060	10.65%
45 TO 49	1,037,120	8.63%	24,501	7.05%	1,399	7.24%
50 TO 54	817,095	6.80%	17,860	5.14%	837	4.33%
55 TO 59	677,550	5.64%	13,754	3.96%	577	2.98%
60 TO 64	635,854	5.29%	11,113	3.20%	418	2.16%
65 TO 69	680,046	5.66%	10,333	2.97%	322	1.67%
70 TO 74	631,210	5.25%	9,280	2.67%	197	1.02%
75 TO 79	460,413	3.83%	7,015	2.02%	114	0.59%
80 TO 84	270,859	2.25%	4,468	1.29%	54	0.28%
85 AND OVER	137,486	1.14%	2,848	0.82%	69	0.36%
NOT STATED	0	0.00%	3,729	1.07%	238	1.23%
TOTAL	12,019,156		347,675		19,334	

## FLORIDA RESIDENT DRIVERS IN FATAL CRASHES BY AGE

	DRIVER LICENSES ISSUED	PERCENT	IN FATAL CRASHES	PERCENT	DRINKING DRIVERS	PERCENT
UNDER 15	0	0.00%	28	0.73%	1	0.14%
15 TO 19	562,370	4.68%	354	9.18%	39	5.42%
20 TO 24	989,090	8.23%	508	13.17%	124	17.25%
25 TO 29	1,226,613	10.21%	446	11.56%	113	15.72%
30 TO 34	1,384,384	11.52%	428	11.09%	111	15.44%
35 TO 39	1,337,162	11.13%	454	11.77%	108	15.02%
40 TO 44	1,171,904	9.75%	329	8.53%	62	8.62%
45 TO 49	1,037,120	8.63%	261	6.77%	62	8.62%
50 TO 54	817,095	6.80%	191	4.95%	26	3.62%
55 TO 59	677,550	5.64%	147	3.81%	24	3.34%
60 TO 64	635,854	5.29%	104	2.70%	6	0.83%
65 TO 69	680,046	5.66%	122	3.16%	9	1.25%
70 TO 74	631,210	5.25%	141	3.65%	12	1.67%
75 TO 79	460,413	3.83%	132	3.42%	6	0.83%
80 TO 84	270,859	2.25%	114	2.95%	6	0.83%
85 AND OVER	137,486	1.14%	62	1.61%	3	0.42%
NOT STATED	0	0.00%	37	0.96%	7	0.97%
TOTAL	12,019,156		3,858		719	

# ► Selected Age Groups\*

Age of Driver	Driver Licenses Issued	%	Drivers In All Crashes	%	Drinking Drivers In All Crashes	%	Drivers In Fatal Crashes	%	Drinking Drivers In Fatal Crashes	%
Under 15	0	0.00%	2,569	0.74%	21	0.11%	28	0.73%	1	0.16%
15	42,477	0.35%	1,076	0.31%	31	0.16%	11	0.29%	0	0.00%
16	98,637	0.82%	7,511	2.16%	88	0.46%	67	1.74%	4	0.56%
17	123,039	1.02%	9,379	2.70%	165	0.85%	74	1.92%	8	1.11%
18	144,393	1.20%	10,439	3.00%	301	1.56%	99	2.57%	10	1.39%
19	153,824	1.28%	9,590	2.76%	361	1.87%	103	2.67%	17	2.36%
20	167,223	1.39%	9,491	2.73%	434	2.24%	108	2.80%	30	4.17%
21	183,976	1.53%	9,149	2.63%	579	2.99%	98	2.54%	20	2.78%
22	196,671	1.64%	9,251	2.66%	603	3.12%	96	2.49%	23	3.20%
23	207,989	1.73%	9,334	2.68%	619	3.20%	102	2.64%	29	4.03%
24	233,231	1.94%	9,564	2.75%	628	3.25%	104	2.70%	22	3.06%
25	249,867	2.08%	9,256	2.66%	654	3.38%	78	2.02%	19	2.64%
26	241,913	2.01%	8,629	2.48%	583	3.02%	90	2.33%	24	3.34%
27	240,399	2.00%	8,321	2.39%	586	3.03%	97	2.51%	27	3.76%
28	242,121	2.01%	8,204	2.36%	518	2.68%	81	2.10%	19	2.64%
29	252,313	2.10%	8,458	2.43%	617	3.19%	100	2.59%	24	3.34%
<hr/>										
70	133,029	1.11%	2,004	0.58%	41	0.21%	26	0.67%	4	0.56%
71	132,372	1.10%	1,936	0.56%	41	0.21%	27	0.70%	1	0.14%
72	125,802	1.05%	1,806	0.52%	47	0.24%	26	0.67%	2	0.28%
73	120,234	1.00%	1,797	0.52%	37	0.19%	30	0.78%	3	0.42%
74	119,773	1.00%	1,737	0.50%	31	0.16%	32	0.83%	2	0.28%
75	109,464	0.91%	1,607	0.46%	23	0.12%	29	0.75%	2	0.28%
76	97,021	0.81%	1,492	0.43%	26	0.13%	24	0.62%	1	0.14%
77	93,818	0.78%	1,355	0.39%	16	0.08%	24	0.62%	0	0.00%
78	84,540	0.70%	1,346	0.39%	27	0.14%	28	0.73%	2	0.28%
79	75,570	0.63%	1,215	0.35%	22	0.11%	27	0.70%	1	0.14%
80	69,421	0.58%	1,208	0.35%	18	0.09%	26	0.67%	2	0.28%
81	62,082	0.52%	974	0.28%	13	0.07%	29	0.75%	2	0.28%
82	54,109	0.45%	890	0.26%	10	0.05%	24	0.62%	2	0.28%
83	46,659	0.39%	742	0.21%	9	0.05%	17	0.44%	0	0.00%
84	38,588	0.32%	654	0.19%	4	0.02%	18	0.47%	0	0.00%
85 and Over	137,486	1.14%	2,848	0.82%	69	0.36%	62	1.61%	3	0.42%

\*License data on pages 12 and 13 are numbers of Florida driver licenses.  
Driver data are Florida resident drivers in crashes.

# ► Safety Equipment Use\*

Florida Traffic Crash Facts 1 9 9 5

VEHICLE OCCUPANT	No Injury	Possible Injury	Non-Incapacitating Injury	Incapacitating Injury	Fatal	% of Fatalities	Total
With Safety Belts	259,330	91,942	44,470	15,334	574	29.6%	411,650
With Safety Belts & Air Bags	9,203	5,148	4,565	1,428	67	3.5%	20,411
With Air Bags (Only)	445	460	358	191	32	1.6%	1,486
With Child Safety Restraint	8,258	1,662	661	133	11	0.6%	10,725
Not Using Safety Equipment	50,395	18,848	17,588	9,303	1,258	64.8%	97,392
<b>TOTAL</b>	<b>327,682</b>	<b>118,071</b>	<b>67,649</b>	<b>26,393</b>	<b>1,942</b>	<b>100.0%</b>	<b>541,737</b>

## MOTORCYCLIST

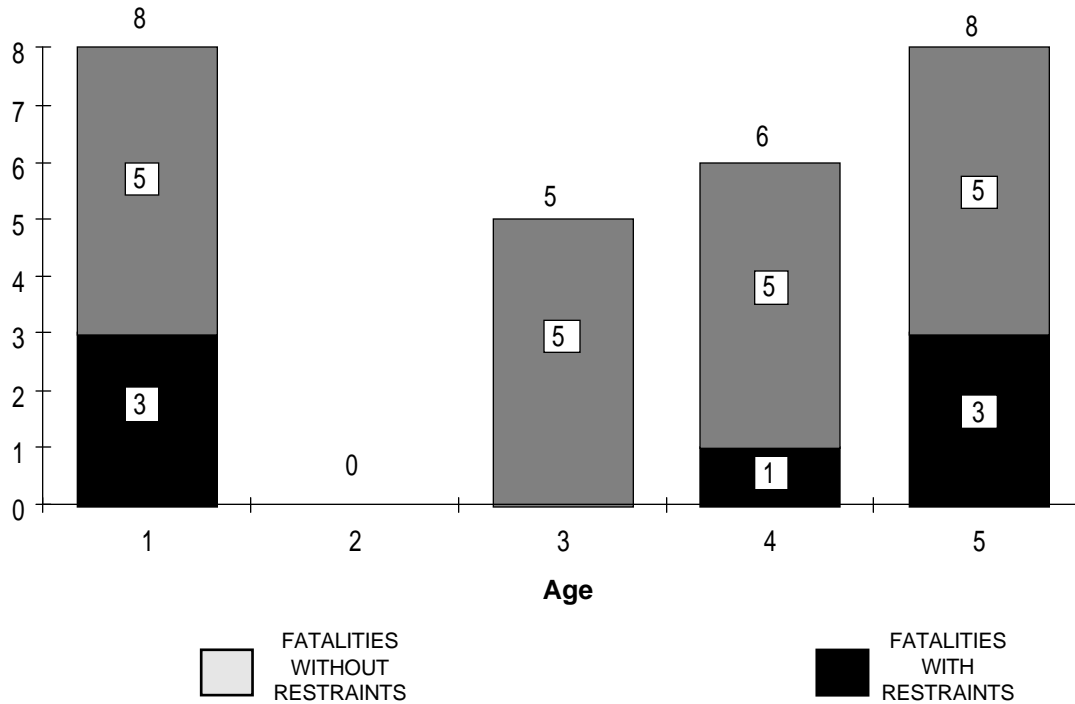
With Safety Helmet	250	550	1,631	1,048	137	84.0%	3,616
Without Safety Helmet	190	276	404	258	26	16.0%	1,154
<b>TOTAL</b>	<b>440</b>	<b>826</b>	<b>2,035</b>	<b>1,306</b>	<b>163</b>	<b>100.0%</b>	<b>4,770</b>

## BICYCLIST

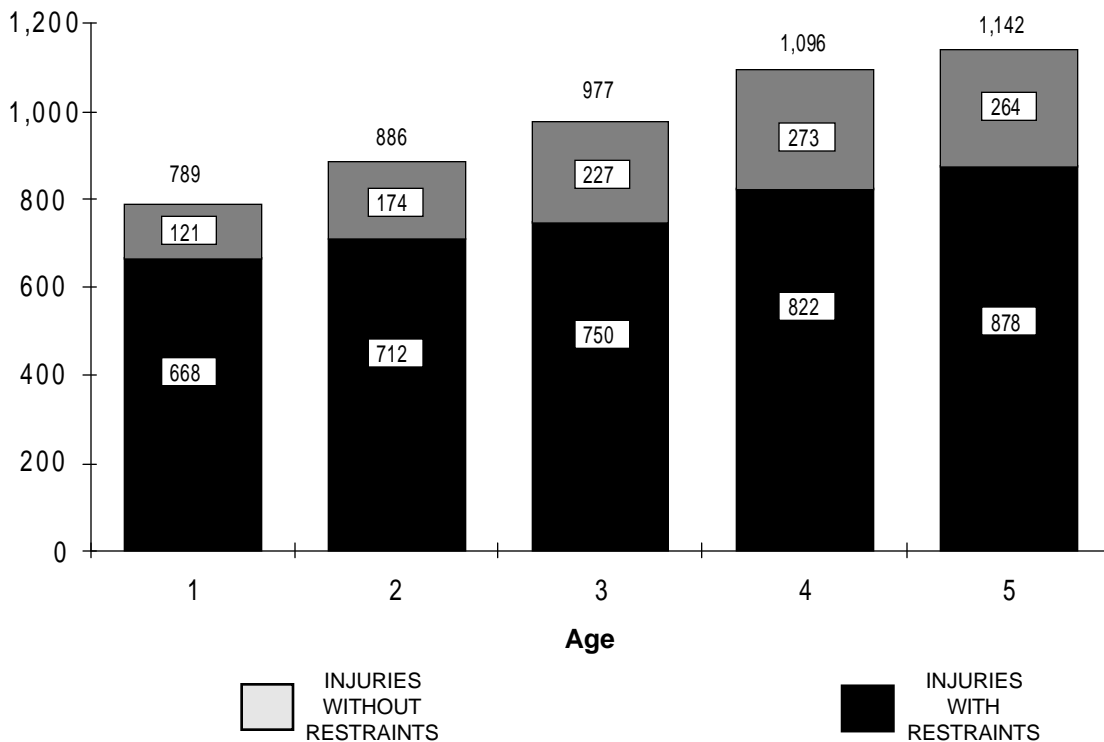
With Safety Helmet	15	85	184	79	11	8.0%	374
Without Safety Helmet	484	2,034	3,213	1,132	126	92.0%	6,989
<b>TOTAL</b>	<b>499</b>	<b>2,119</b>	<b>3,397</b>	<b>1,211</b>	<b>137</b>	<b>100.0%</b>	<b>7,363</b>

\*Does not include cases with safety equipment use or injury level not stated

## TRAFFIC FATALITIES INVOLVING CHILDREN IN PASSENGER VEHICLES



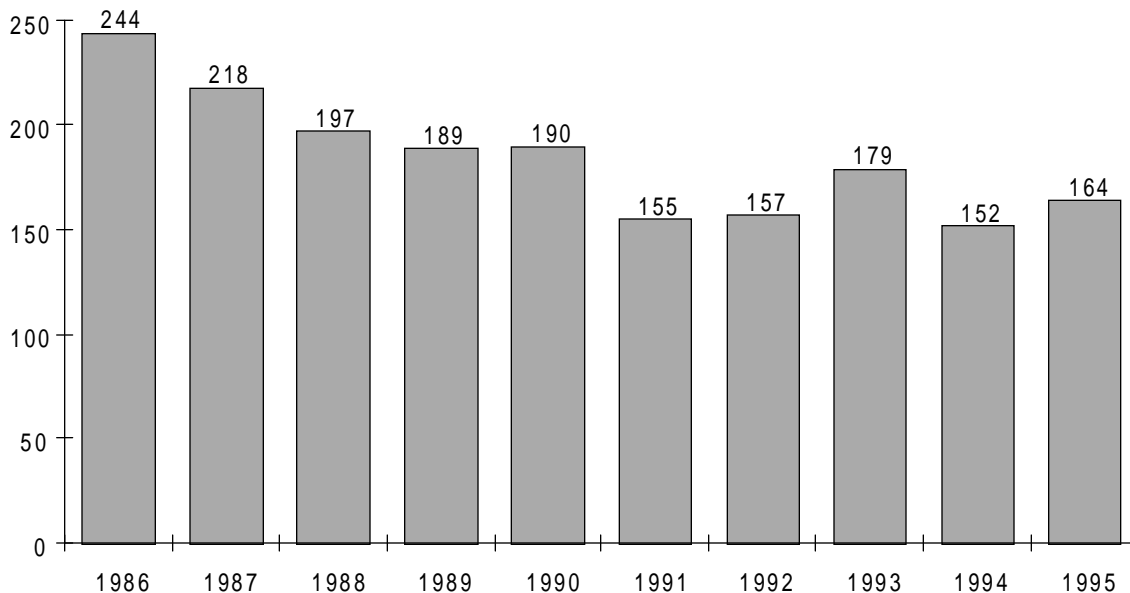
## TRAFFIC INJURIES INVOLVING CHILDREN IN PASSENGER VEHICLES



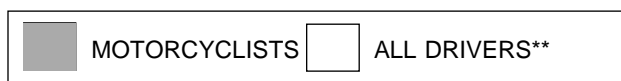
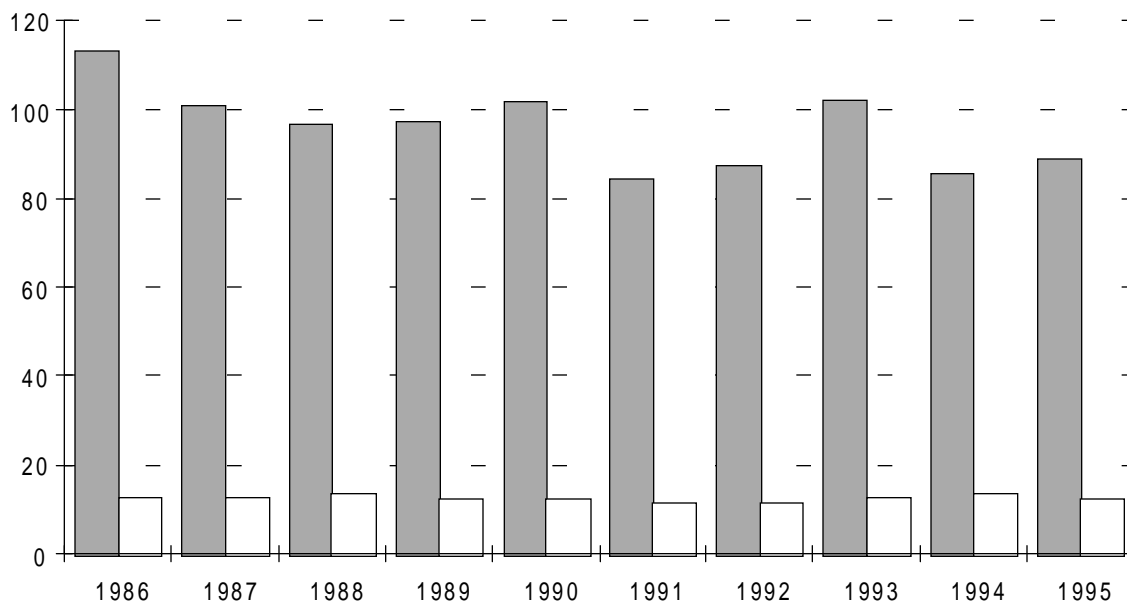


# Motorcyclist Fatality Trends

### MOTORCYCLISTS KILLED



### MOTORCYCLIST FATALITY RATE\* (COMPARED TO ALL MOTOR VEHICLE DRIVERS)

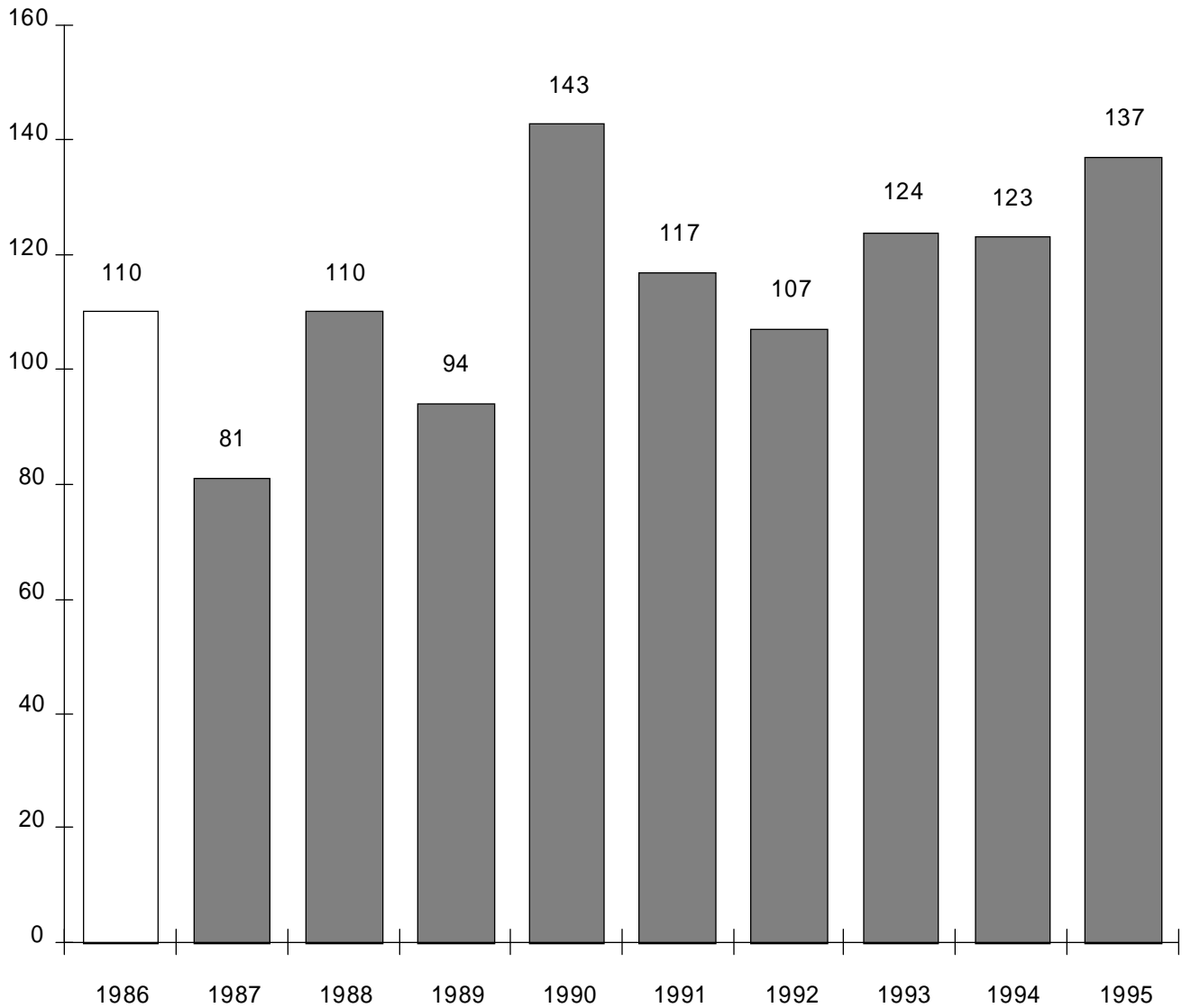


\*PER 100,000 REGISTERED VEHICLES

\*\*1986 data include bicycle drivers.

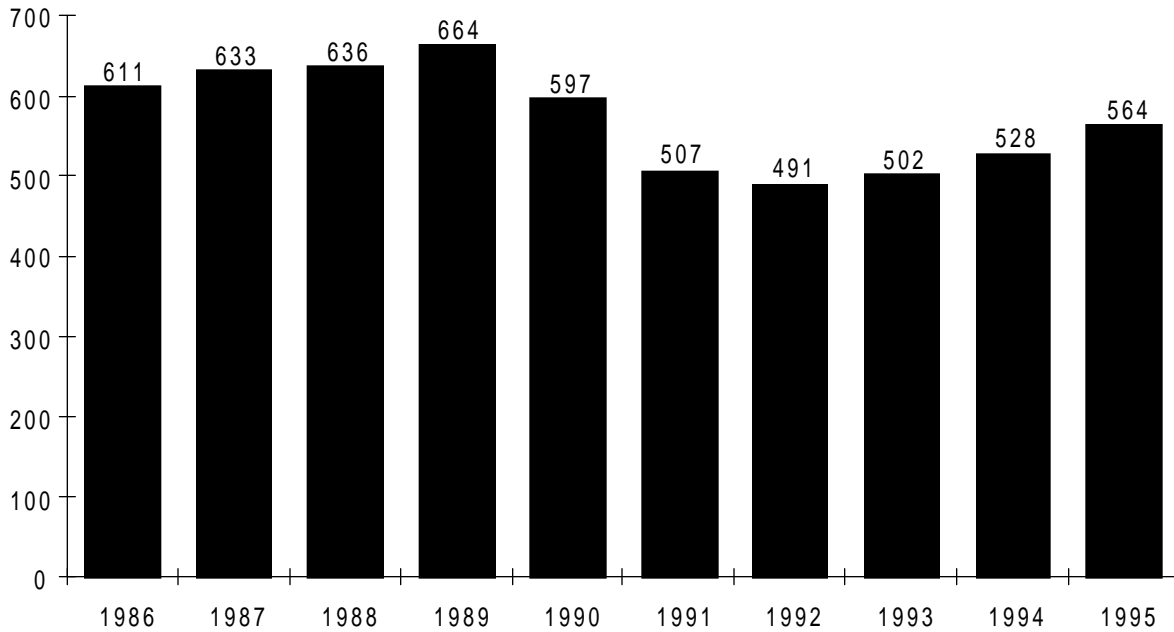


# ► Bicyclist Fatality Trend

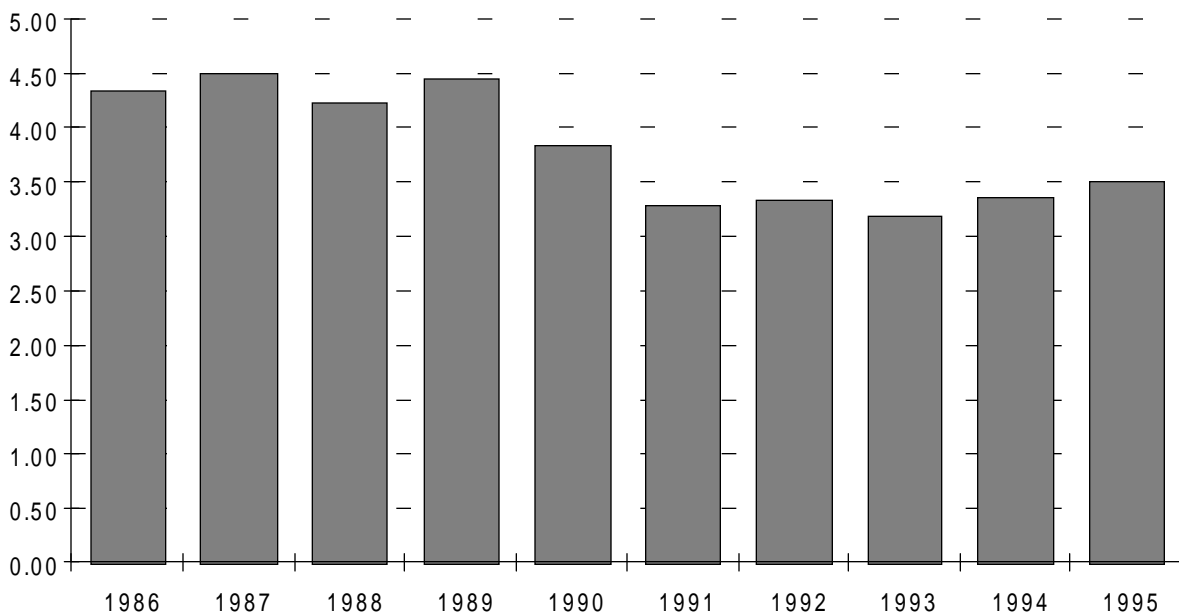


# ▶ Pedestrian Fatality Trends

## PEDESTRIANS KILLED



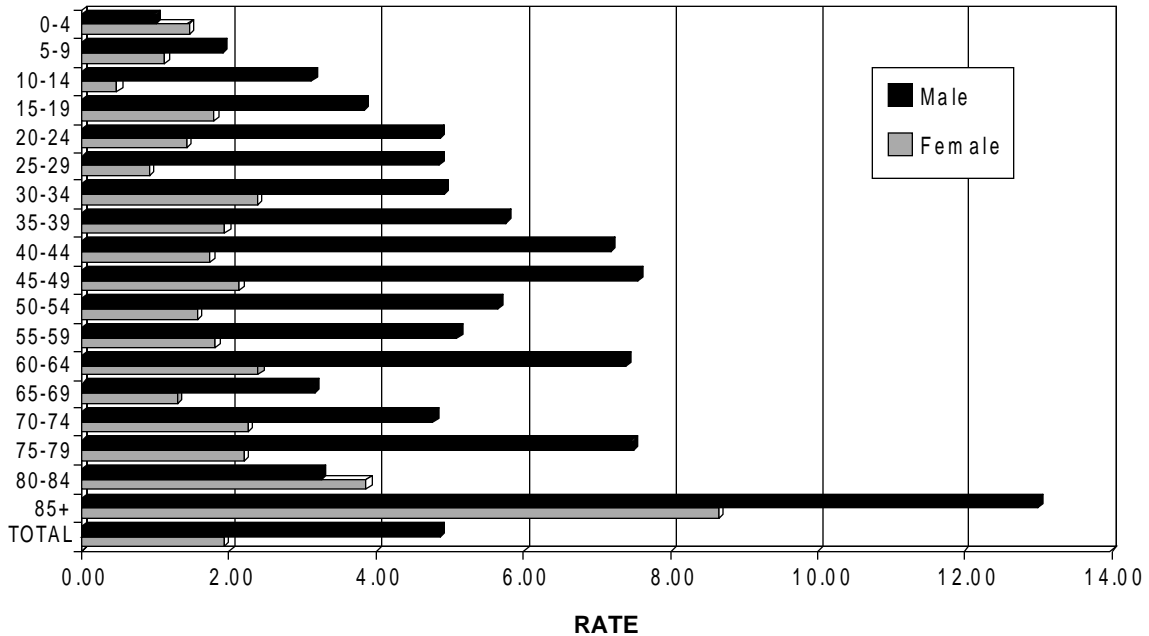
## PEDESTRIAN FATALITY RATE\*



\*FLORIDA RESIDENT PEDESTRIAN FATALITIES PER 100,000 RESIDENTS

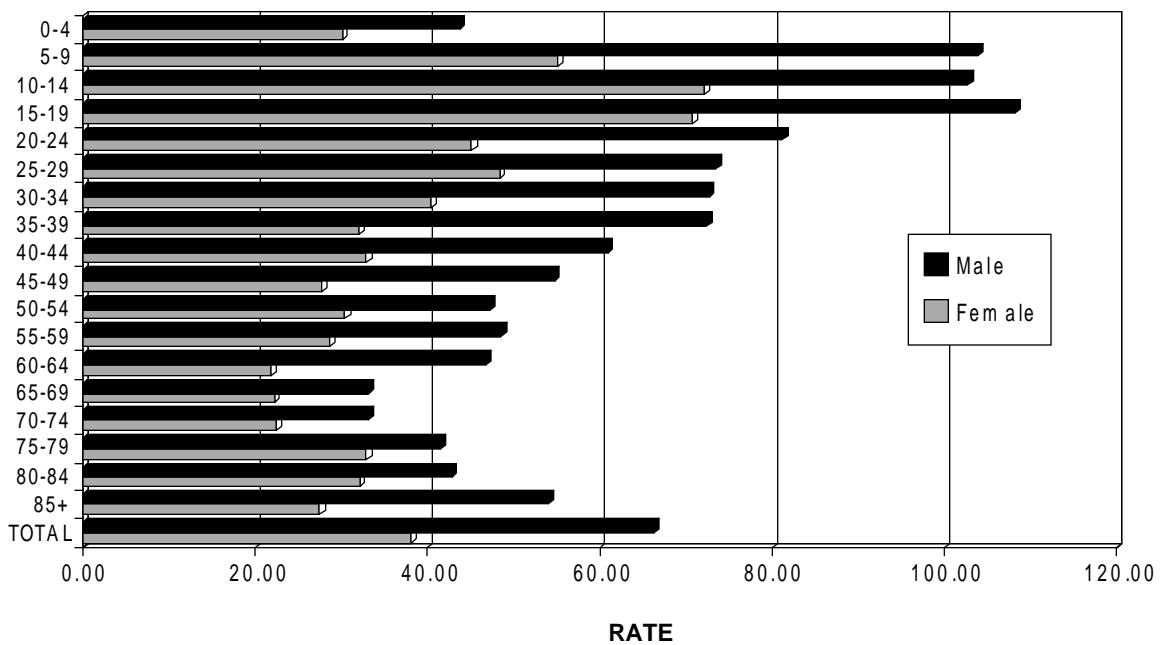
1986 rate includes non-resident pedestrian fatalities.

## PEDESTRIAN FATALITY RATE\* BY SEX AND AGE



\*RESIDENT PEDESTRIANS KILLED PER 100,000 POPULATION IN AGE GROUP

## PEDESTRIAN INJURY RATE\* BY SEX AND AGE



\*RESIDENT PEDESTRIANS INJURED PER 100,000 POPULATION IN AGE GROUP

# ▶ Pedestrian Behavior in Crashes

<b>Action</b>	<b>Fatalities</b>	<b>%</b>	<b>Fatalities &amp; Injuries</b>	<b>%</b>
Crossing At Intersection	78	13.8	1,100	12.8
Crossing Not At Intersection	281	49.8	3,187	37.1
Walking With Traffic	44	7.8	544	6.3
Walking Against Traffic	8	1.4	180	2.1
Standing Or Playing In Road	34	6.0	627	7.3
Pushing Or Working On Vehicle	3	0.5	66	0.8
Other Working In Road	2	0.4	165	1.9
Other	114	20.2	2,729	31.7
Not Stated	0	0	1	0
<b>Totals</b>	<b>564</b>	<b>100.0</b>	<b>8,599</b>	<b>100.0</b>

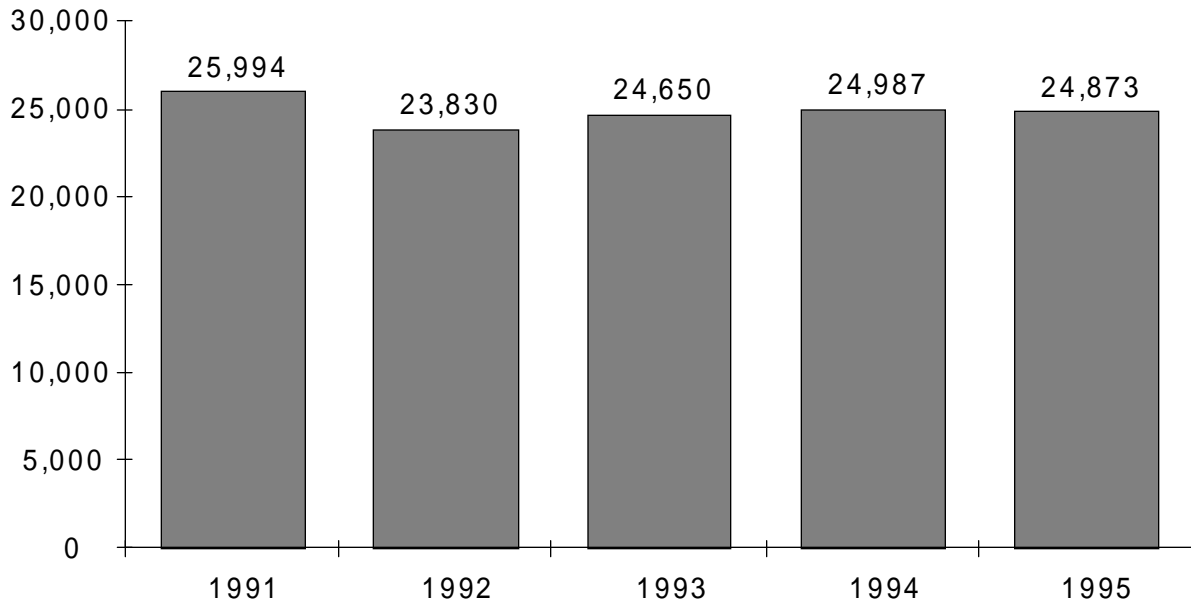
# ► Contributing Causes

This table lists contributing causes reported by the investigating officer for drivers in traffic crashes. There can be up to three contributing causes per driver. Percentage figures compare the relative frequency of these causes.

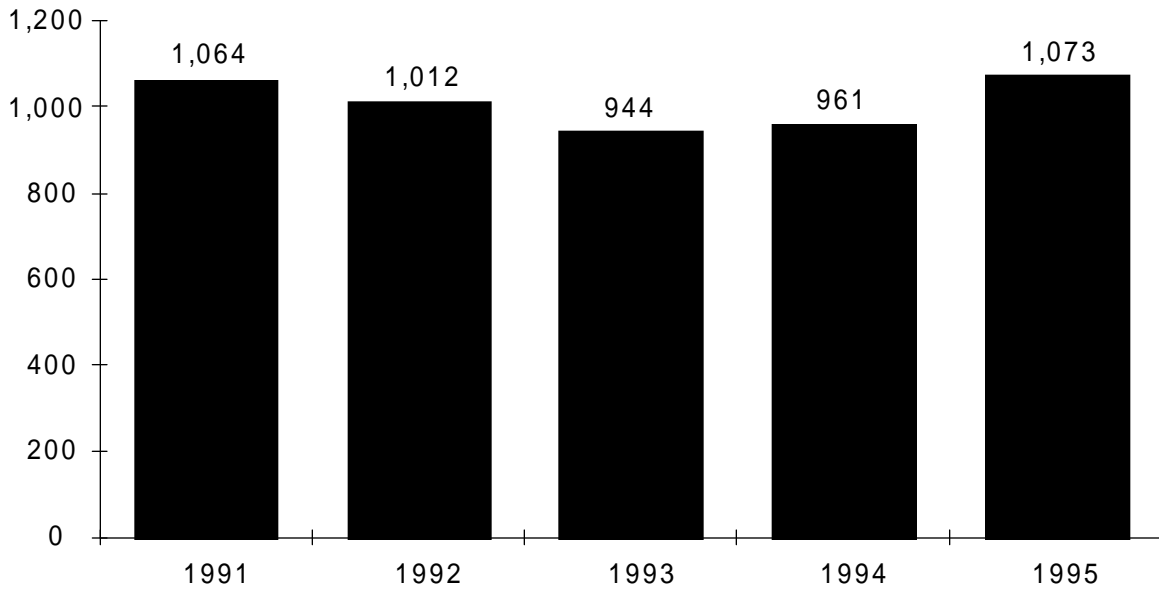
Reported Contributing Cause	Frequency	
	In All Crashes	In Fatal Crashes
No Improper Driving/Action*	49.70%	35.73%
Careless Driving	17.35%	15.07%
Failed to Yield Right-of-Way	11.14%	9.65%
Disregarded Traffic Signal	2.19%	2.29%
Speed Too Fast	2.18%	11.12%
Alcohol - Under Influence	2.15%	5.00%
Followed Too Closely	1.75%	0.06%
Improper Turn	1.73%	1.49%
Improper Lane Change	1.37%	1.10%
Disregarded Stop Sign	0.99%	1.69%
Driving Wrong Side/Way	0.84%	4.80%
Improper Backing	0.78%	0.16%
Failed To Maintain Equipment/Vehicle	0.62%	0.64%
Improper Passing	0.31%	0.76%
Alcohol & Drugs - Under Influence	0.24%	0.80%
Drugs - Under Influence	0.04%	0.10%
All Other	6.60%	9.53%

\*Drivers in this category typically represent those involved in crashes attributed to other drivers. At least one involved driver is reported contributory in about 95% of crashes.

**ALCOHOL-RELATED CRASHES**

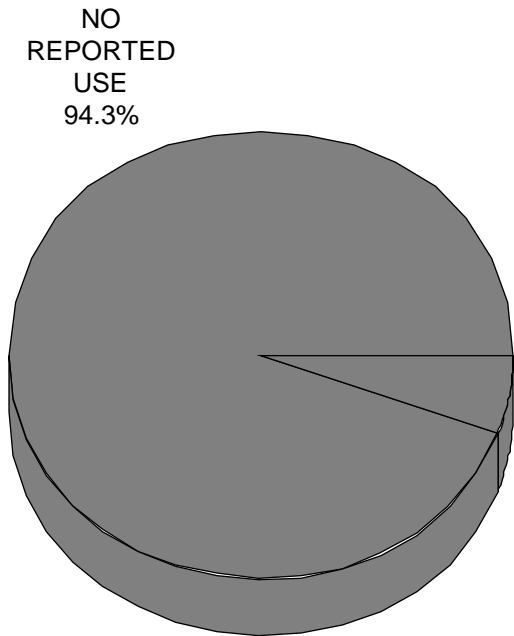


**ALCOHOL-RELATED FATALITIES**

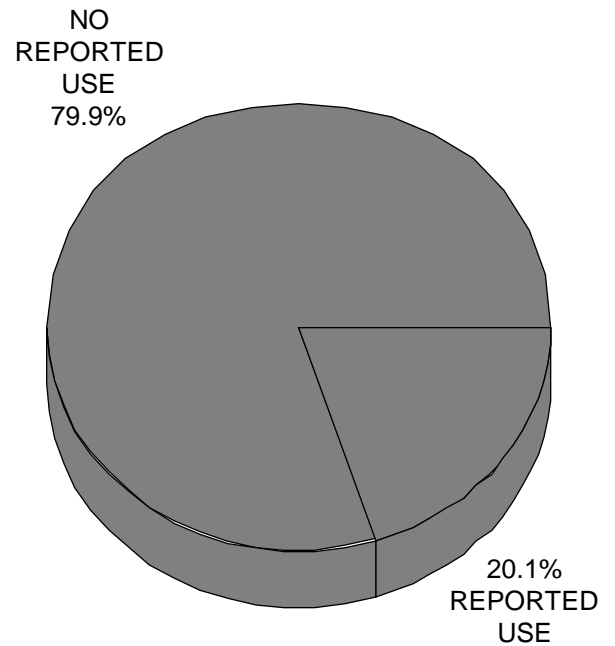


# ▶ Alcohol And Drug Use

## DRIVERS

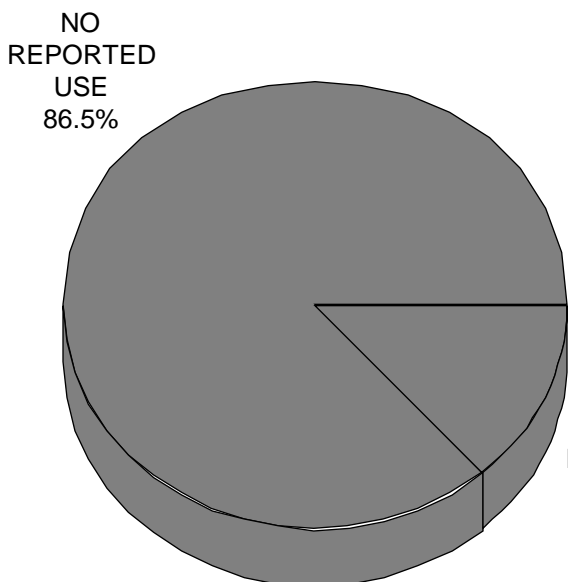


ALL CRASHES

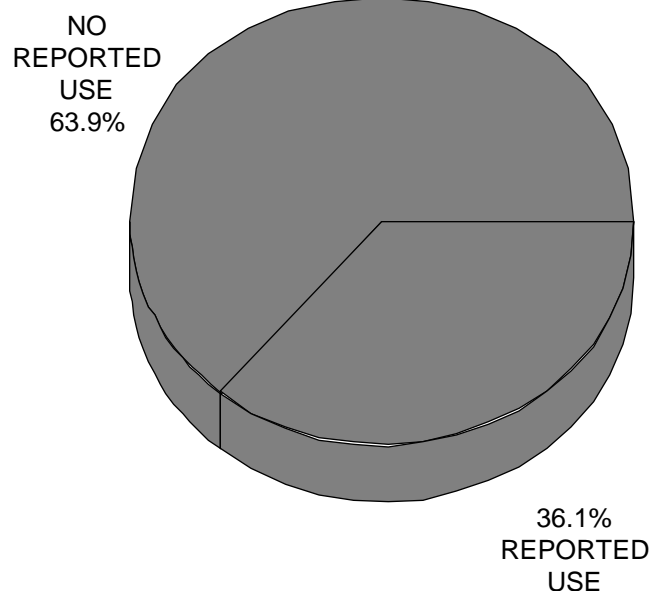


FATAL CRASHES

## PEDESTRIANS

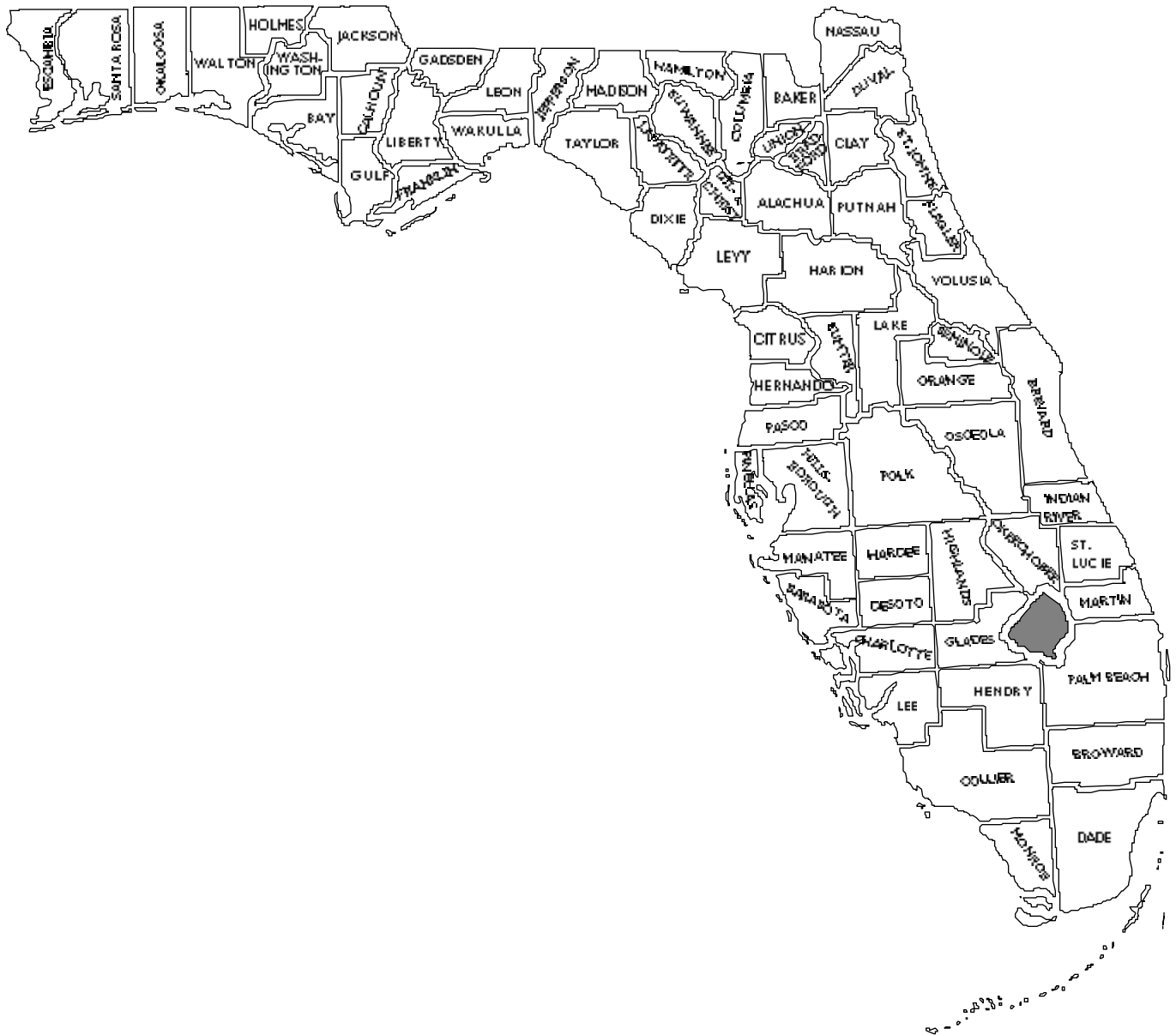


ALL CRASHES



FATAL CRASHES

# ► County/City Data





# ► Fatality Trend by County

Florida Traffic  
Crash Facts 1995

COUNTY	1991	1992	1993	1994	1995	COUNTY	1991	1992	1993	1994	1995
ALACHUA	38	40	42	42	31	LEON	42	38	29	37	40
BAKER	7	6	4	5	5	LEVY	6	11	4	6	5
BAY	22	21	17	26	33	LIBERTY	0	2	0	4	1
BRADFORD	7	7	10	7	7	MADISON	7	6	7	4	17
BREVARD	77	71	68	62	87	MANATEE	33	28	42	48	51
BROWARD	179	180	210	215	210	MARION	65	64	79	56	79
CALHOUN	6	4	2	9	3	MARTIN	13	17	21	32	26
CHARLOTTE	19	20	26	18	23	MONROE	32	30	25	26	22
CITRUS	20	18	23	21	35	NASSAU	9	27	14	14	18
CLAY	14	11	16	20	20	OKALOOSA	16	24	24	21	28
COLLIER	53	46	46	35	49	OKEECHOBEE	10	6	16	11	6
COLUMBIA	28	14	26	22	14	ORANGE	113	102	117	120	144
DADE	298	319	365	307	333	OSCEOLA	34	35	25	44	40
DE SOTO	7	13	15	11	12	PALM BEACH	168	164	187	200	200
DIXIE	3	6	9	6	2	PASCO	40	45	67	74	67
DUVAL	100	93	103	111	117	PINELLAS	97	108	100	106	122
ESCAMBIA	46	39	40	55	47	POLK	101	102	118	90	129
FLAGLER	10	13	10	7	11	PUTNAM	25	18	18	25	21
FRANKLIN	5	3	2	2	2	ST. JOHNS	22	26	25	12	20
GADSDEN	26	20	16	16	14	ST. LUCIE	36	34	29	43	40
GILCHRIST	3	5	5	3	3	SANTA ROSA	24	21	26	16	27
GLADES	5	5	7	4	6	SARASOTA	35	43	35	44	46
GULF	3	3	4	3	2	SEMINOLE	33	27	30	36	40
HAMILTON	6	4	8	9	8	SUMTER	17	19	15	8	8
HARDEE	5	10	13	7	8	SUWANNEE	14	11	12	17	15
HENDRY	17	15	8	19	18	TAYLOR	5	6	3	6	9
HERNANDO	18	28	32	35	17	UNION	4	1	6	4	1
HIGHLANDS	16	19	35	19	30	VOLUSIA	100	66	100	108	80
HILLSBOROUGH	181	182	168	198	203	WAKULLA	7	4	8	7	7
HOLMES	9	5	12	9	8	WALTON	23	19	18	11	14
INDIAN RIVER	21	9	20	19	25	WASHINGTON	8	7	12	6	9
JACKSON	16	15	12	14	12						
JEFFERSON	4	7	10	7	6	STATEWIDE*	2,523	2,480	2,719	2,722	2,847
LAFAYETTE	2	0	2	4	0						
LAKE	35	33	38	41	44						
LEE	78	85	82	98	70						

\*Statewide totals include crashes with county unknown.

# ► Crash Trend by County

COUNTY	1991	1992	1993	1994	1995	COUNTY	1991	1992	1993	1994	1995
ALACHUA	2,873	2,990	3,336	3,349	3,414	LEON	4,297	4,194	4,164	4,511	4,921
BAKER	94	95	169	163	226	LEVY	201	251	263	290	303
BAY	1,779	1,753	1,718	1,777	2,085	LIBERTY	41	34	37	62	64
BRADFORD	338	357	332	367	369	MADISON	179	174	227	192	217
BREVARD	4,439	4,625	4,557	4,700	4,650	MANATEE	2,814	2,745	2,946	3,009	3,190
BROWARD	21,392	22,370	23,805	25,374	25,958	MARION	2,511	2,753	2,512	2,725	2,967
CALHOUN	103	110	113	97	102	MARTIN	1,315	1,206	1,231	1,316	1,455
CHARLOTTE	1,261	1,355	1,339	1,436	1,358	MONROE	1,154	1,169	1,254	1,165	1,123
CITRUS	857	873	899	951	1,060	NASSAU	521	476	472	398	401
CLAY	781	788	675	803	1,006	OKALOOSA	1,456	1,617	1,633	1,626	1,671
COLLIER	2,096	2,017	2,057	2,321	2,392	OKEECHOBEE	340	355	400	332	365
COLUMBIA	429	447	541	568	575	ORANGE	11,391	12,069	11,891	12,735	12,870
DADE	36,914	36,717	36,325	36,053	43,233	OSCEOLA	1,698	1,664	1,514	1,719	1,865
DE SOTO	283	333	265	297	315	PALM BEACH	12,865	13,201	13,388	14,448	14,929
DIXIE	90	98	129	90	145	PASCO	2,453	2,515	2,778	2,813	3,344
DUVAL	11,174	11,055	11,575	12,233	13,053	PINELLAS	11,130	10,354	10,471	10,971	11,919
ESCAMBIA	3,381	3,572	3,448	3,612	3,985	POLK	5,342	5,116	5,510	5,822	6,735
FLAGLER	274	264	307	338	360	PUTNAM	789	752	764	885	869
FRANKLIN	65	77	75	81	108	ST. JOHNS	1,164	1,330	1,273	1,321	1,297
GADSDEN	571	568	609	613	607	ST. LUCIE	2,025	1,940	2,011	2,115	2,200
GILCHRIST	59	63	65	78	90	SANTA ROSA	814	866	872	960	1,036
GLADES	87	86	117	115	93	SARASOTA	3,280	2,913	2,900	3,043	3,856
GULF	86	70	94	71	88	SEMINOLE	2,349	2,394	2,302	3,020	3,326
HAMILTON	110	114	128	139	126	SUMTER	307	363	344	439	394
HARDEE	253	268	274	305	266	SUWANNEE	289	260	291	298	296
HENDRY	402	352	350	363	330	TAYLOR	248	230	263	291	271
HERNANDO	919	895	910	1,005	993	UNION	80	60	76	83	87
HIGHLANDS	650	687	733	660	769	VOLUSIA	5,762	5,986	5,902	5,987	6,016
HILLSBOROUGH	17,558	17,289	17,168	16,259	21,071	WAKULLA	177	166	140	163	194
HOLMES	154	142	123	151	151	WALTON	354	369	412	389	384
INDIAN RIVER	945	957	1,079	1,091	1,191	WASHINGTON	141	166	156	146	182
JACKSON	515	461	452	482	458						
JEFFERSON	137	156	170	167	178	STATEWIDE*	195,312	196,176	199,039	206,183	228,589
LAFAYETTE	45	37	41	31	46						
LAKE	1,560	1,545	1,537	1,710	1,677						
LEE	5,141	4,759	4,937	4,855	7,170						

\*Statewide totals include crashes with county unknown.

# ▶ Alcohol-Related Fatalities by County

Florida Traffic  
Crash Facts 1 9 9 5

COUNTY	Total Fatalities	Alcohol-Related Fatalities	Alcohol-Related Fatalities as Percent of Total	COUNTY	Total Fatalities	Alcohol-Related Fatalities	Alcohol-Related Fatalities as Percent of Total
ALACHUA	31	15	48.39	LEON	40	16	40.00
BAKER	5	5	100.00	LEVY	5	4	80.00
BAY	33	20	60.61	LIBERTY	1	1	100.00
BRADFORD	7	3	42.86	MADISON	17	4	23.53
BREVARD	87	36	41.38	MANATEE	51	15	29.41
BROWARD	210	55	26.19	MARION	79	35	44.30
CALHOUN	3	3	100.00	MARTIN	26	12	46.15
CHARLOTTE	23	8	34.78	MONROE	22	13	59.09
CITRUS	35	10	28.57	NASSAU	18	8	44.44
CLAY	20	11	55.00	OKALOOSA	28	12	42.86
COLLIER	49	16	32.65	OKEECHOBEE	6	5	83.33
COLUMBIA	14	3	21.43	ORANGE	144	55	38.19
DADE	333	82	24.62	OSCEOLA	40	25	62.50
DE SOTO	12	4	33.33	PALM BEACH	200	66	33.00
DIXIE	2	1	50.00	PASCO	67	29	43.28
DUVAL	117	34	29.06	PINELLAS	122	41	33.61
ESCAMBIA	47	22	46.81	POLK	129	53	41.09
FLAGLER	11	3	27.27	PUTNAM	21	13	61.90
FRANKLIN	2	2	100.00	ST. JOHNS	20	9	45.00
GADSDEN	14	11	78.57	ST. LUCIE	40	17	42.50
GILCHRIST	3	1	33.33	SANTA ROSA	27	15	55.56
GLADES	6	5	83.33	SARASOTA	46	21	45.65
GULF	2	1	50.00	SEMINOLE	40	18	45.00
HAMILTON	8	5	62.50	SUMTER	8	3	37.50
HARDEE	8	4	50.00	SUWANNEE	15	7	46.67
HENDRY	18	8	44.44	TAYLOR	9	7	77.78
HERNANDO	17	5	29.41	UNION	1	0	0.00
HIGHLANDS	30	7	23.33	VOLUSIA	80	35	43.75
HILLSBOROUGH	203	71	34.98	WAKULLA	7	7	100.00
HOLMES	8	2	25.00	WALTON	14	4	28.57
INDIAN RIVER	25	15	60.00	WASHINGTON	9	3	33.33
JACKSON	12	7	58.33				
JEFFERSON	6	1	16.67				
LAFAYETTE	0	0	0.00	STATEWIDE*	2,847	1,073	37.69
LAKE	44	11	25.00				
LEE	70	33	47.14				

\*Statewide totals include crashes with county unknown.

# ▶ Alcohol-Related Crashes by County

Florida Traffic 1 9 9 5  
Crash Facts

COUNTY	Total Crashes	Alcohol-Related Crashes	Alcohol-Related Crashes as Percent of Total	COUNTY	Total Crashes	Alcohol-Related Crashes	Alcohol-Related Crashes as Percent of Total
ALACHUA	3,414	342	10.02	LEON	4,921	497	10.10
BAKER	226	45	19.91	LEVY	303	55	18.15
BAY	2,085	404	19.38	LIBERTY	64	19	29.69
BRADFORD	369	68	18.43	MADISON	217	31	14.29
BREVARD	4,650	776	16.69	MANATEE	3,190	469	14.70
BROWARD	25,958	2,291	8.83	MARION	2,967	346	11.66
CALHOUN	102	22	21.57	MARTIN	1,455	268	18.42
CHARLOTTE	1,358	165	12.15	MONROE	1,123	232	20.66
CITRUS	1,060	186	17.55	NASSAU	401	82	20.45
CLAY	1,006	170	16.90	OKALOOSA	1,671	328	19.63
COLLIER	2,392	371	15.51	OKEECHOBEE	365	80	21.92
COLUMBIA	575	111	19.30	ORANGE	12,870	1,402	10.89
DADE	43,233	2,577	5.96	OSCEOLA	1,865	235	12.60
DE SOTO	315	60	19.05	PALM BEACH	14,929	1,575	10.55
DIXIE	145	29	20.00	PASCO	3,344	417	12.47
DUVAL	13,053	1,231	9.43	PINELLAS	11,919	1,504	12.62
ESCAMBIA	3,985	669	16.79	POLK	6,735	721	10.71
FLAGLER	360	65	18.06	PUTNAM	869	177	20.37
FRANKLIN	108	27	25.00	ST. JOHNS	1,297	218	16.81
GADSDEN	607	117	19.28	ST. LUCIE	2,200	282	12.82
GILCHRIST	90	20	22.22	SANTA ROSA	1,036	182	17.57
GLADES	93	23	24.73	SARASOTA	3,856	551	14.29
GULF	88	25	28.41	SEMINOLE	3,326	357	10.73
HAMILTON	126	28	22.22	SUMTER	394	50	12.69
HARDEE	266	34	12.78	SUWANNEE	296	56	18.92
HENDRY	330	68	20.61	TAYLOR	271	59	21.77
HERNANDO	993	143	14.40	UNION	87	17	19.54
HIGHLANDS	769	102	13.26	VOLUSIA	6,016	770	12.80
HILLSBOROUGH	21,071	2,070	9.82	WAKULLA	194	55	28.35
HOLMES	151	25	16.56	WALTON	384	81	21.09
INDIAN RIVER	1,191	165	13.85	WASHINGTON	182	23	12.64
JACKSON	458	74	16.16				
JEFFERSON	178	29	16.29				
LAFAYETTE	46	12	26.09	STATEWIDE*	228,589	24,873	10.88
LAKE	1,677	249	14.85				
LEE	7,170	926	12.91				

\*Statewide totals include crashes with county unknown.

# ▶ Alcohol-Related Crashes by City

Florida Traffic Crash Facts 1995

City	County	Total Crashes	Alcohol-Related Crashes	Alcohol-Related Crashes as % of Total
ALACHUA	ALACHUA	114	15	13.16
ALTAMONTE SPRINGS	SEMINOLE	740	53	7.16
ALTHA	CALHOUN	1	0	0.00
ANNA MARIA	MANATEE	21	2	9.52
APALACHICOLA	FRANKLIN	14	1	7.14
APOPKA	ORANGE	242	11	4.55
ARCADIA	DE SOTO	95	10	10.53
ARCHER	ALACHUA	22	1	4.55
ATLANTIC BEACH	DUVAL	148	36	24.32
ATLANTIS	PALM BEACH	12	3	25.00
AUBURNDALE	POLK	201	19	9.45
AVON PARK	HIGHLANDS	178	13	7.30
AZALEA PARK	ORANGE	4	0	0.00
BAL HARBOR	DADE	60	3	5.00
BALDWIN	DUVAL	31	2	6.45
BARTOW	POLK	281	20	7.12
BASCOM	JACKSON	1	1	100.00
BAY HARBOR ISLANDS	DADE	29	0	0.00
BAY LAKE	ORANGE	2	0	0.00
BAYSHORE GARDENS	MANATEE	3	0	0.00
BEACON SQUARE	PASCO	1	0	0.00
BELLE GLADE	PALM BEACH	389	36	9.25
BELLE ISLE	ORANGE	2	0	0.00
BELLEAIR	PINELLAS	13	2	15.38
BELLEAIR BEACH	PINELLAS	6	1	16.67
BELLEAIR BLUFFS	PINELLAS	22	2	9.09
BELLEVIEW	MARION	70	5	7.14
BELVEDERE HOMES	PALM BEACH	6	2	33.33
BETHUNE COOKMAN COLL.	VOLUSIA	1	0	0.00
BISCAYNE GARDENS	DADE	3	0	0.00
BISCAYNE PARK	DADE	29	1	3.45
BLOUNTSTOWN	CALHOUN	22	0	0.00
BOCA CHICA NAS	MONROE	2	2	100.00
BOCA RATON	PALM BEACH	1705	146	8.56
BONIFAY	HOLMES	8	0	0.00
BONITA SPRINGS	LEE	67	12	17.91
BOWLING GREEN	HARDEE	13	2	15.38
BOYNTON BEACH	PALM BEACH	799	76	9.51
BRADENTON	MANATEE	266	24	9.02
BRADENTON BEACH	MANATEE	2	0	0.00
BRANDON	HILLSBOROUGH	172	12	6.98
BRANFORD	SUWANNEE	2	1	50.00
BRENT	ESCAMBIA	122	19	15.57
BRINY BREEZES	PALM BEACH	2	1	50.00
BRISTOL	LIBERTY	1	0	0.00
BROADVIEW PARK	BROWARD	8	2	25.00
BRONSON	LEVY	5	1	20.00
BROOKSVILLE	HERNANDO	76	9	11.84
BROWDALE	BROWARD	6	0	0.00
BUNCHE PARK	DADE	6	1	16.67
BUNNELL	FLAGLER	25	3	12.00
BUSHNELL	SUMTER	18	2	11.11
CALLAHAN	NASSAU	25	4	16.00
CALLOWAY	BAY	127	19	14.96
CANTONMENT	ESCAMBIA	23	3	13.04
CAPE CANAVERAL	BREVARD	74	16	21.62
CAPE CORAL	LEE	3360	328	9.76
CAROL CITY	DADE	178	2	1.12
CARRABELLE	FRANKLIN	13	4	30.77
CARVER RANCH ESTATES	BROWARD	9	1	11.11
CASSELBERRY	SEMINOLE	279	50	17.92
CEDAR GROVE	BAY	26	3	11.54
CEDAR KEY	LEVY	2	1	50.00

City	County	Total Crashes	Alcohol-Related Crashes	Alcohol-Related Crashes as % of Total
CENTER HILL	SUMTER	2	0	0.00
CENTURY	ESCAMBIA	9	3	33.33
CHATTAHOOCHEE	GADSDEN	13	3	23.08
CHIEFLAND	LEVY	35	3	8.57
CHIPLEY	WASHINGTON	32	4	12.50
CLAIR-MEL	HILLSBOROUGH	41	5	12.20
CLEARWATER	PINELLAS	1739	217	12.48
CLERMONT	LAKE	120	8	6.67
CLEWISTON	HENDRY	77	17	22.08
CLOUD LAKE	PALM BEACH	3	0	0.00
COCOA	BREVARD	423	40	9.46
COCOA BEACH	BREVARD	327	52	15.90
COCOA WEST	BREVARD	13	2	15.38
COCONUT CREEK	BROWARD	419	43	10.26
COLEMAN	SUMTER	1	0	0.00
COLLIER MANR/CRESTHAVN	BROWARD	24	1	4.17
COMBEE SETTLEMENT	POLK	1	1	100.00
CONWAY	ORANGE	7	1	14.29
COOPER CITY	BROWARD	199	13	6.53
CORAL GABLES	DADE	842	73	8.67
CORAL SPRINGS	BROWARD	1317	78	5.92
CORAL WAY VILLAGE	DADE	2	1	50.00
COTTONDALE	JACKSON	3	0	0.00
CRAWFORDVILLE	WAKULLA	5	0	0.00
CRESCENT CITY	PUTNAM	30	3	10.00
CRESTVIEW	OKALOOSA	177	14	7.91
CROSS CITY	DIXIE	28	4	14.29
CRYSTAL RIVER	CITRUS	141	19	13.48
CUTLER RIDGE	DADE	35	3	8.57
CYPRESS GARDENS	POLK	1	0	0.00
DADE CITY	PASCO	135	15	11.11
DANIA	BROWARD	472	58	12.29
DAVENPORT	POLK	1	0	0.00
DAVIE	BROWARD	1263	120	9.50
DAYTONA BEACH	VOLUSIA	2495	228	9.14
DAYTONA BEACH AIRPORT	VOLUSIA	1	0	0.00
DAYTONA BEACH SHORES	VOLUSIA	67	13	19.40
DE BARY	VOLUSIA	35	6	17.14
DE LAND	VOLUSIA	275	25	9.09
DE LEON SPRINGS	VOLUSIA	20	5	25.00
DEERFIELD BEACH	BROWARD	862	68	7.89
DEFUNIAK SPRINGS	WALTON	60	9	15.00
DELRAY BEACH	PALM BEACH	833	70	8.40
DELTONA	VOLUSIA	150	23	15.33
DUNDEE	POLK	2	0	0.00
DUNEDIN	PINELLAS	377	47	12.47
DUNNELLON	MARION	20	0	0.00
EAGLE LAKE	POLK	22	1	4.55
EAST LAKE ORIENT PARK	HILLSBOROUGH	8	1	12.50
EAST NAPLES	COLLIER	351	45	12.82
EATONVILLE	ORANGE	21	0	0.00
EBRO	WASHINGTON	2	0	0.00
ECKERD COLLEGE	PINELLAS	1	0	0.00
EDGEWATER	VOLUSIA	209	27	12.92
EDGEWOOD	ORANGE	36	8	22.22
EGLIN AFB	OKALOOSA	1	0	0.00
EGYPT LAKE	HILLSBOROUGH	11	0	0.00
EL PORTAL	DADE	22	2	9.09
ELLYSON FIELD NAS	ESCAMBIA	1	0	0.00
ENGLEWOOD	CHARLOTTE	51	13	25.49
ENGLEWOOD	SARASOTA	5	0	0.00
EUSTIS	LAKE	188	22	11.70
EVERGLADES	COLLIER	14	0	0.00

# ▶ Alcohol-Related Crashes by City

Florida Traffic  
Crash Facts 1995

City	County	Total Crashes	Alcohol-Related Crashes	Alcohol-Related Crashes as % of Total
FELLSMERE	INDIAN RIVER	3	1	33.33
FERNANDINA BEACH	NASSAU	88	12	13.64
FLA. MEMORIAL COLLEGE	ST. JOHNS	2	0	0.00
FLAGLER BEACH	FLAGLER	38	12	31.58
FLORIDA A&M UNIVERSITY	LEON	33	0	0.00
FLORIDA ATLANTIC UNIV.	PALM BEACH	60	6	10.00
FLORIDA CITY	DADE	12	2	16.67
FLORIDA SOUTHERN COLL.	POLK	2	0	0.00
FLORIDA STATE UNIV.	LEON	17	1	5.88
FORT MEADE	POLK	35	5	14.29
FORT MYERS	LEE	1387	131	9.44
FORT MYERS BEACH	LEE	37	11	29.73
FORT MYERS SE	LEE	11	3	27.27
FORT MYERS SW	LEE	65	16	24.62
FORT PIERCE	ST. LUCIE	572	54	9.44
FORT PIERCE NW	ST. LUCIE	24	1	4.17
FORT WHITE	COLUMBIA	3	0	0.00
FREEPORT	WALTON	6	2	33.33
FROSTPROOF	POLK	28	6	21.43
FRUITLAND PARK	LAKE	45	5	11.11
FT. LAUDERDALE	BROWARD	4279	471	11.01
FT. MYERS VIL/PIN MN	LEE	4	0	0.00
FT. WALTON BEACH	OKALOOSA	275	48	17.45
GAINESVILLE	ALACHUA	1866	157	8.41
GIFFORD	INDIAN RIVER	3	0	0.00
GOLDEN BEACH	DADE	9	1	11.11
GOLDEN GLADES	DADE	42	1	2.38
GOULDS	DADE	36	1	2.78
GRACEVILLE	JACKSON	18	3	16.67
GRAND RIDGE	JACKSON	4	0	0.00
GREEN COVE SPRINGS	CLAY	31	8	25.81
GREENACRES CITY	PALM BEACH	258	29	11.24
GREENVILLE	MADISON	2	0	0.00
GRETNA	GADSDEN	3	0	0.00
GROVELAND	LAKE	19	3	15.79
GULF BREEZE	SANTA ROSA	120	16	13.33
GULF GATE ESTATES	SARASOTA	1	0	0.00
GULF STREAM	PALM BEACH	4	1	25.00
GULFPORT	PINELLAS	147	17	11.56
HACIENDA	BROWARD	5	1	20.00
HAINES CITY	POLK	326	29	8.90
HALLANDALE	BROWARD	659	22	3.34
HASTINGS	ST. JOHNS	14	1	7.14
HAVANA	GADSDEN	12	1	8.33
HAVERHILL	PALM BEACH	13	0	0.00
HAWTHORNE	ALACHUA	26	1	3.85
HIALEAH	DADE	4566	228	4.99
HIALEAH GARDENS	DADE	208	20	9.62
HIGH SPRINGS	ALACHUA	60	7	11.67
HIGHLAND BEACH	PALM BEACH	10	0	0.00
HIGHLAND PARK	BAY	2	1	50.00
HILLIARD	NASSAU	6	1	16.67
HILLSBORO BEACH	BROWARD	8	0	0.00
HOBE SOUND	MARTIN	56	13	23.21
HOLLY HILL	VOLUSIA	173	25	14.45
HOLLYWOOD	BROWARD	2377	219	9.21
HOLLYWOOD RIDGE FARM	BROWARD	5	0	0.00
HOLMES BEACH	MANATEE	52	10	19.23
HOMESTEAD	DADE	376	33	8.78
HOMESTEAD AFB	DADE	4	0	0.00
HOMOSASSA SPRINGS	CITRUS	9	2	22.22
HORSESHOE BEACH	DIXIE	2	0	0.00
HOWEY-IN-THE-HILLS	LAKE	10	1	10.00

City	County	Total Crashes	Alcohol-Related Crashes	Alcohol-Related Crashes as % of Total
HYPOLUXO	PALM BEACH	13	3	23.08
IMMOKALEE	COLLIER	264	55	20.83
INDIALANTIC	BREVARD	33	1	3.03
INDIAN CREEK VILLAGE	DADE	17	1	5.88
INDIAN HARBOUR BEACH	BREVARD	27	7	25.93
INDIAN RIVER SHORES	INDIAN RIVER	6	2	33.33
INDIAN ROCKS BEACH	PINELLAS	45	5	11.11
INDIAN SHORES	PINELLAS	27	5	18.52
INDIANTOWN	MARTIN	44	15	34.09
INGLIS	LEVY	5	0	0.00
INTERLACHEN	PUTNAM	30	5	16.67
INVERNESS	CITRUS	55	5	9.09
ISLAMORADA	MONROE	34	7	20.59
ISLANDIA	DADE	1	0	0.00
JACKSONVILLE	DUVAL	12204	1086	8.90
JACKSONVILLE BEACH	DUVAL	470	73	15.53
JACKSONVILLE NAS	DUVAL	7	2	28.57
JACKSONVILLE UNIV.	DUVAL	3	1	33.33
JASPER	HAMILTON	4	0	0.00
JAY	SANTA ROSA	1	0	0.00
JENNINGS	HAMILTON	2	1	50.00
JENSEN BEACH	MARTIN	116	33	28.45
JUNO BEACH	PALM BEACH	26	4	15.38
JUPITER	PALM BEACH	595	80	13.45
JUPITER INLET CLNY	PALM BEACH	3	1	33.33
JUPITER ISLAND	MARTIN	5	1	20.00
KENDALL	DADE	108	5	4.63
KENNEDY SPACE CENTER	BREVARD	29	4	13.79
KENNETH CITY	PINELLAS	59	12	20.34
KEY BISCAYNE	DADE	31	2	6.45
KEY COLONY BEACH	MONROE	9	3	33.33
KEY LARGO	MONROE	162	29	17.90
KEY WEST	MONROE	323	73	22.60
KEYSTONE HEIGHTS	CLAY	4	2	50.00
KISSIMMEE	OSCEOLA	527	64	12.14
LA BELLE	HENDRY	38	7	18.42
LA CROSSE	ALACHUA	3	0	0.00
LADY LAKE	LAKE	71	8	11.27
LAKE ALFRED	POLK	34	10	29.41
LAKE BUENA VISTA	ORANGE	44	5	11.36
LAKE BUTLER	UNION	12	2	16.67
LAKE CITY	COLUMBIA	135	16	11.85
LAKE CLARKE SHORES	PALM BEACH	16	2	12.50
LAKE FOREST	BROWARD	4	0	0.00
LAKE HAMILTON	POLK	27	2	7.41
LAKE HELEN	VOLUSIA	10	0	0.00
LAKE HOLLOWAY	POLK	3	1	33.33
LAKE MAGDALENE	HILLSBOROUGH	26	6	23.08
LAKE MARY	SEMINOLE	112	14	12.50
LAKE PARK	PALM BEACH	116	16	13.79
LAKE PLACID	HIGHLANDS	14	1	7.14
LAKE WALES	POLK	130	8	6.15
LAKE WORTH	PALM BEACH	812	112	13.79
LAKELAND	POLK	1578	151	9.57
LAND O'LAKES	PASCO	26	7	26.92
LANTANA	PALM BEACH	59	5	8.47
LARGO	PINELLAS	736	111	15.08
LAUDERDALE LAKES	BROWARD	565	16	2.83
LAUDERDALE-BY-THE-SEA	BROWARD	76	14	18.42
LAUDERHILL	BROWARD	496	17	3.43
LAWTEY	BRADFORD	6	0	0.00
LAYTON	MONROE	2	0	0.00
LAZY LAKE VILLAGE	BROWARD	4	1	25.00

# ▶ Alcohol-Related Crashes by City

Florida Traffic  
Crash Facts 1 9 9 5

City	County	Total Crashes	Alcohol-Related Crashes	Alcohol-Related Crashes as % of Total
LEALMAN	PINELLAS	4	0	0.00
LEE CO. AIRPORT POLICE	LEE	34	3	8.82
LEESBURG	LAKE	299	33	11.04
LEHIGH ACRES	LEE	28	4	14.29
LEISURE CITY	DADE	20	1	5.00
LETO	HILLSBOROUGH	1	0	0.00
LIGHTHOUSE POINT	BROWARD	186	26	13.98
LIVE OAK	SUWANNEE	83	9	10.84
LOCKHART	ORANGE	1	0	0.00
LONGBOAT KEY	MANATEE	14	4	28.57
LONGBOAT KEY	SARASOTA	23	2	8.70
LONGWOOD	SEMINOLE	210	24	11.43
LYNN HAVEN	BAY	117	8	6.84
MACCLENNY	BAKER	61	7	11.48
MACDILL AFB	HILLSBOROUGH	2	0	0.00
MADEIRA BEACH	PINELLAS	86	26	30.23
MADISON	MADISON	44	3	6.82
MAITLAND	ORANGE	186	22	11.83
MALABAR	BREVARD	15	4	26.67
MALONE	JACKSON	1	0	0.00
MANALAPAN	PALM BEACH	8	0	0.00
MANGONIA PARK	PALM BEACH	96	7	7.29
MARATHON	MONROE	138	20	14.49
MARGATE	BROWARD	740	64	8.65
MARIANNA	JACKSON	91	14	15.38
MARY ESTHER	OKALOOSA	25	3	12.00
MASCOTTE	LAKE	33	10	30.30
MAYO	LAFAYETTE	11	5	45.45
MAYPORT NAS	DUVAL	2	0	0.00
MEDLEY	DADE	153	7	4.58
MELBOURNE	BREVARD	662	105	15.86
MELBOURNE BEACH	BREVARD	15	4	26.67
MEMPHIS	MANATEE	1	0	0.00
MERRITT ISLAND	BREVARD	384	75	19.53
MEXICO BEACH	BAY	10	3	30.00
MIAMI	DADE	8145	563	6.91
MIAMI BEACH	DADE	2430	287	11.81
MIAMI LAKES	DADE	42	5	11.90
MIAMI SHORES	DADE	224	15	6.70
MIAMI SPRINGS	DADE	56	6	10.71
MICANOPY	ALACHUA	9	0	0.00
MICC. INDIAN RES.	DADE	1	0	0.00
MIDDLEBURG	CLAY	13	2	15.38
MILTON	SANTA ROSA	71	7	9.86
MIMS	BREVARD	37	4	10.81
MINNEOLA	LAKE	2	1	50.00
MIRAMAR	BROWARD	528	49	9.28
MONTICELLO	JEFFERSON	19	1	5.26
MONTVERDE	LAKE	1	0	0.00
MOORE HAVEN	GLADES	3	1	33.33
MOUNT DORA	LAKE	163	16	9.82
MULBERRY	POLK	29	6	20.69
MYRTLE GROVE	ESCAMBIA	57	7	12.28
NAPLES	COLLIER	391	51	13.04
NARANJA	DADE	7	0	0.00
NEPTUNE BEACH	DUVAL	87	21	24.14
NEW PORT RICHEY	PASCO	335	40	11.94
NEW SMYRNA BEACH	VOLUSIA	309	44	14.24
NEWBERRY	ALACHUA	35	4	11.43
NICEVILLE	OKALOOSA	116	22	18.97
NOKOMIS/LAUREL	SARASOTA	3	1	33.33
NORTH ANDREWS GARDENS	BROWARD	5	1	20.00
NORTH BAY VILLAGE	DADE	55	4	7.27
NORTH FORT MYERS	LEE	34	4	11.76
NORTH LAUDERDALE	BROWARD	237	27	11.39

City	County	Total Crashes	Alcohol-Related Crashes	Alcohol-Related Crashes as % of Total
NORTH MIAMI	DADE	1534	47	3.06
NORTH MIAMI BEACH	DADE	906	47	5.19
NORTH NAPLES	COLLIER	221	28	12.67
NORTH PALM BEACH	PALM BEACH	103	5	4.85
NORTH PORT	SARASOTA	68	10	14.71
NORTH REDINGTON BEACH	PINELLAS	15	1	6.67
OAK HILL	VOLUSIA	8	1	12.50
OAKLAND	ORANGE	35	3	8.57
OAKLAND PARK	BROWARD	1173	122	10.40
OCALA	MARION	1108	76	6.86
OCEAN BREEZE PARK	MARTIN	2	0	0.00
OCEAN CITY	OKALOOSA	17	2	11.76
OCEAN RIDGE	PALM BEACH	4	0	0.00
OCEAN RIDGE PARK	MARTIN	1	0	0.00
OCOEE	ORANGE	237	29	12.24
OJUS	DADE	3	0	0.00
OKALOOSA CNTY ARPT	OKALOOSA	4	1	25.00
OKEECHOBEE	OKEECHOBEE	122	19	15.57
OLDSMAR	PINELLAS	158	12	7.59
OLYMPIA HEIGHTS	DADE	1	0	0.00
ONECO	MANATEE	8	1	12.50
OPA LOCKA	DADE	174	5	2.87
ORANGE CITY	VOLUSIA	107	15	14.02
ORANGE PARK	CLAY	120	18	15.00
ORLANDO	ORANGE	4625	349	7.55
ORLOVISTA	ORANGE	6	0	0.00
ORMOND BEACH	VOLUSIA	359	52	14.48
ORMOND BY THE SEA	VOLUSIA	14	4	28.57
OTTER CREEK	LEVY	1	0	0.00
OVIEDO	SEMINOLE	175	11	6.29
PAHOKEE	PALM BEACH	58	12	20.69
PALATKA	PUTNAM	328	46	14.02
PALM BAY	BREVARD	457	75	16.41
PALM BEACH	PALM BEACH	150	22	14.67
PALM BEACH AFB	PALM BEACH	1	0	0.00
PALM BEACH GARDENS	PALM BEACH	482	51	10.58
PALM BEACH SHORES	PALM BEACH	9	3	33.33
PALM CITY	MARTIN	57	11	19.30
PALM RIVER/CLAIR MEL	HILLSBOROUGH	13	0	0.00
PALM SHORES	BREVARD	2	0	0.00
PALM SPRINGS	PALM BEACH	82	11	13.41
PALMETTO	MANATEE	267	25	9.36
PALMETTO ESTATES	DADE	1	0	0.00
PANAMA CITY	BAY	724	107	14.78
PANAMA CITY BEACH	BAY	199	39	19.60
PARKER	BAY	98	13	13.27
PARKLAND	BROWARD	29	4	13.79
PARRISH	MANATEE	5	0	0.00
PATRICK AFB	BREVARD	2	1	50.00
PAXTON	WALTON	6	3	50.00
PEMBROKE PARK	BROWARD	200	26	13.00
PEMBROKE PINES	BROWARD	1079	39	3.61
PENSACOLA	ESCAMBIA	771	116	15.05
PERRINE	DADE	43	4	9.30
PERRY	TAYLOR	162	20	12.35
PIERSON	VOLUSIA	10	0	0.00
PINE HILLS	ORANGE	138	5	3.62
PINELLAS PARK	PINELLAS	827	86	10.40
PINEWOOD	DADE	35	0	0.00
PINL CO CAMPUS P.D.	PINELLAS	2	0	0.00
PLANT CITY	HILLSBOROUGH	578	38	6.57
PLANTATION	BROWARD	1300	87	6.69
POLK CITY	POLK	13	1	7.69
POMPANO BEACH	BROWARD	2058	219	10.64
POMPANO BEACH HLNDS	BROWARD	14	2	14.29

# ▶ Alcohol-Related Crashes by City

Florida Traffic  
Crash Facts 1995

City	County	Total Crashes	Alcohol-Related Crashes	Alcohol-Related Crashes as % of Total
PONCE DE LEON	HOLMES	3	1	33.33
PONCE INLET	VOLUSIA	2	0	0.00
PORT CHARLOTTE	CHARLOTTE	360	47	13.06
PORT ORANGE	VOLUSIA	373	46	12.33
PORT RICHEY	PASCO	87	17	19.54
PORT SALERNO	MARTIN	46	16	34.78
PORT ST. JOE	GULF	17	3	17.65
PORT ST. LUCIE	ST. LUCIE	775	103	13.29
PORT WASHINGTON	WALTON	1	0	0.00
PUNTA GORDA	CHARLOTTE	169	15	8.88
QUINCY	GADSDEN	202	23	11.39
REDINGTON BEACH	PINELLAS	7	1	14.29
REDINGTON SHORES	PINELLAS	31	11	35.48
RICHMOND HEIGHTS	DADE	9	1	11.11
RIDGEWOOD HEIGHTS	SARASOTA	3	1	33.33
RIVERLAND	BROWARD	1	0	0.00
RIVIERA BEACH	PALM BEACH	567	83	14.64
ROCKLEDGE	BREVARD	153	13	8.50
ROYAL PALM BEACH	PALM BEACH	160	16	10.00
RUSKIN	HILLSBOROUGH	20	2	10.00
SAFETY HARBOR	PINELLAS	163	13	7.98
SAMOSET	MANATEE	2	0	0.00
SAN ANTONIO	PASCO	2	1	50.00
SANFORD	SEMINOLE	608	57	9.38
SANIBEL	LEE	60	3	5.00
SANTA ROSA BEACH	WALTON	4	0	0.00
SARASOTA	SARASOTA	1397	171	12.24
SARASOTA S	SARASOTA	2	2	100.00
SATELLITE BEACH	BREVARD	62	14	22.58
SEA RANCH LAKES	BROWARD	7	1	14.29
SEBASTIAN	INDIAN RIVER	124	16	12.90
SEBRING	HIGHLANDS	160	25	15.63
SEMINOLE	PINELLAS	274	28	10.22
SEMINOLE PARK	PINELLAS	6	0	0.00
SEVILLE	VOLUSIA	4	1	25.00
SEWALLS POINT	MARTIN	25	5	20.00
SHALIMAR	OKALOOSA	1	0	0.00
SIESTA KEY	SARASOTA	3	1	33.33
SILVER SPRINGS SHORES	MARION	4	1	25.00
SKY LAKE	ORANGE	11	2	18.18
SNEADS	JACKSON	16	2	12.50
SOPCHOPPY	WAKULLA	2	2	100.00
SOUTH BAY	PALM BEACH	30	3	10.00
SOUTH DAYTONA	VOLUSIA	119	27	22.69
SOUTH MIAMI	DADE	256	12	4.69
SOUTH MIAMI HEIGHTS	DADE	4	0	0.00
SOUTH PALM BEACH	PALM BEACH	6	2	33.33
SOUTH PASADENA	PINELLAS	92	13	14.13
SOUTH PATRICK SHORES	BREVARD	5	4	80.00
SPRINGFIELD	BAY	84	7	8.33
ST. AUGUSTINE	ST. JOHNS	286	36	12.59
ST. AUGUSTINE BEACH	ST. JOHNS	41	16	39.02
ST. CLOUD	OSCEOLA	208	20	9.62
ST. LEO	PASCO	2	0	0.00
ST. MARKS	WAKULLA	2	2	100.00
ST. PETERSBURG	PINELLAS	3382	390	11.53
ST. PETERSBURG BEACH	PINELLAS	200	24	12.00
STARKE	BRADFORD	158	15	9.49
STETSON UNIVERSITY	VOLUSIA	5	2	40.00
STUART	MARTIN	503	61	12.13
SUNNY ISLES	DADE	5	0	0.00
SUNRISE	BROWARD	668	35	5.24
SURFSIDE	DADE	110	12	10.91
SWEETWATER	DADE	33	2	6.06
SWEETWATER CREEK	HILLSBOROUGH	4	0	0.00

City	County	Total Crashes	Alcohol-Related Crashes	Alcohol-Related Crashes as % of Total
TALLAHASSEE	LEON	3968	314	7.91
TAMARAC	BROWARD	883	46	5.21
TAMPA	HILLSBOROUGH	10212	843	8.25
TARPON SPRINGS	PINELLAS	407	40	9.83
TAVARES	LAKE	109	3	2.75
TAVERNIER	MONROE	44	8	18.18
TEMPLE TERRACE	HILLSBOROUGH	205	20	9.76
TEQUESTA VILLAGE	PALM BEACH	30	3	10.00
TICE	LEE	4	0	0.00
TITUSVILLE	BREVARD	557	75	13.46
TREASURE ISLAND	PINELLAS	103	27	26.21
TRENTON	GILCHRIST	4	0	0.00
TYNDALL AFB	BAY	1	1	100.00
ULETA	DADE	3	0	0.00
UMATILLA	LAKE	17	6	35.29
UNION PARK	ORANGE	2	0	0.00
UNIV. OF CENTRAL FLA.	ORANGE	23	2	8.70
UNIV. OF NORTH FLORIDA	DUVAL	26	0	0.00
UNIV. OF S. FLORIDA	HILLSBOROUGH	106	5	4.72
UNIV. OF WEST FLORIDA	ESCAMBIA	15	2	13.33
UNIVERSITY OF FLORIDA	ALACHUA	87	5	5.75
UNIVERSITY OF MIAMI	DADE	7	1	14.29
UNIVERSITY OF TAMPA	HILLSBOROUGH	8	0	0.00
VALPARAISO	OKALOOSA	28	6	21.43
VENICE	SARASOTA	158	14	8.86
VENICE SOUTH	SARASOTA	13	0	0.00
VERNON	WASHINGTON	3	1	33.33
VERO BEACH	INDIAN RIVER	344	31	9.01
VERO BEACH SOUTH	INDIAN RIVER	4	2	50.00
VIRGINIA GARDENS	DADE	33	1	3.03
WABASSO	INDIAN RIVER	6	1	16.67
WAHNETA	POLK	3	0	0.00
WAKULLA	WAKULLA	1	0	0.00
WALDO	ALACHUA	5	1	20.00
WARRINGTON	ESCAMBIA	89	11	12.36
WAUCHULA	HARDEE	79	10	12.66
WEBSTER	SUMTER	1	0	0.00
WELAKA	PUTNAM	5	3	60.00
WEST BRADENTON	MANATEE	809	80	9.89
WEST EAU GALLIE	BREVARD	2	0	0.00
WEST GATE	PALM BEACH	6	1	16.67
WEST HOLLYWOOD	BROWARD	7	0	0.00
WEST MELBOURNE	BREVARD	109	15	13.76
WEST MIAMI	DADE	94	7	7.45
WEST PALM BEACH	PALM BEACH	1906	138	7.24
WEST PENSACOLA	ESCAMBIA	73	13	17.81
WEST WINTER HAVEN	POLK	6	2	33.33
WESTVIEW	DADE	1	0	0.00
WESTWOOD LAKES	DADE	1	0	0.00
WEWAHITCHKA	GULF	3	2	66.67
WHITE SPRINGS	HAMILTON	6	1	16.67
WILDWOOD	SUMTER	38	2	5.26
WILLISTON	LEVY	54	3	5.56
WILTON MANORS	BROWARD	190	31	16.32
WINDERMERE	ORANGE	9	3	33.33
WINSTON	POLK	3	0	0.00
WINTER GARDEN	ORANGE	177	15	8.47
WINTER HAVEN	POLK	661	45	6.81
WINTER PARK	ORANGE	316	46	14.56
WINTER SPRINGS	SEMINOLE	141	4	2.84
YULEE	NASSAU	8	0	0.00
ZEPHYRHILLS	PASCO	181	12	6.63
ZOLFO SPRINGS	HARDEE	6	0	0.00