



**Terry L. Rhodes**  
Executive Director

2900 Apalachee Parkway  
Tallahassee, Florida 32399-0500  
[www.flhsmv.gov](http://www.flhsmv.gov)

August 24, 2015

Honorable Rick Scott  
Governor of Florida  
PL5, The Capitol  
400 South Monroe Street  
Tallahassee, FL 32399

Honorable Andy Gardiner  
Senate President  
409 The Capitol  
404 South Monroe Street  
Tallahassee, FL 32399

Honorable Steve Crisafulli  
Speaker of the House  
420 The Capitol  
402 South Monroe Street  
Tallahassee, FL 32399

Dear Governor, President, and Speaker,

Pursuant to the provisions of Section 316.614(9), Florida Statutes, the Department of Highway Safety and Motor Vehicles respectfully submits the Safety Belt Violation Data Collection Annual Report for 2014.

The Annual report is a compilation of safety belt enforcement data obtained from the Florida's state law enforcement agencies, state university law enforcement agencies, county sheriff's, and municipal law enforcement agencies.

Should you have any questions, please contact me at 850-617-3100.

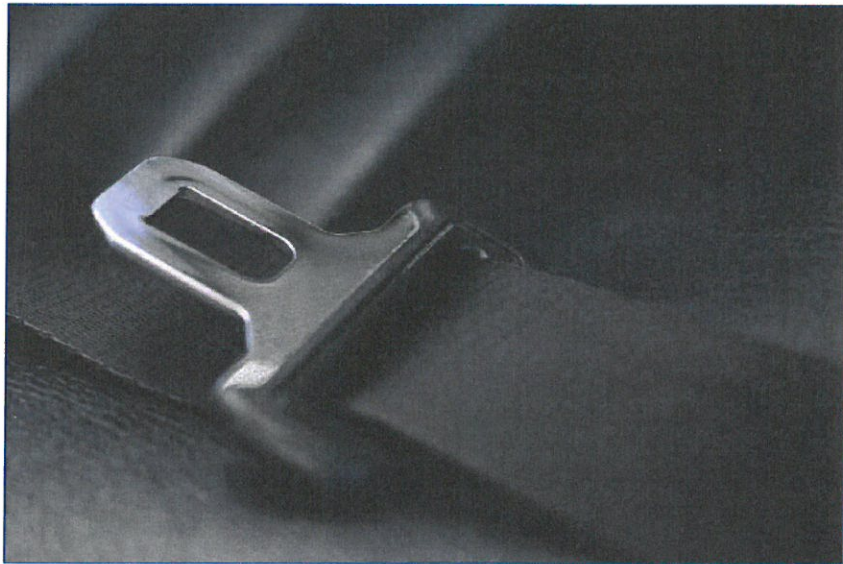
Respectfully,

Terry L. Rhodes  
Executive Director



## Department of Highway Safety and Motor Vehicles

Seat Belt Violation Data Collection 316.614(9), F.S.  
Annual Report 2014



Prepared by:  
Division of Florida Highway Patrol

# Seat Belt Violation Data Collection 316.614(9), F.S.

## INDEX

<b>Report Type</b>	<b>Page</b>
Statewide Totals for Law Enforcement Agencies	1
State County Sheriff's Law Enforcement Agencies	2
State Municipal Law Enforcement Agencies	4
State Law Enforcement Agencies	10
State University Law Enforcement Agencies	11

**Department of Highway Safety and Motor Vehicles  
Seat Belt Violation Data Collection System 316.614(9), F.S.**

**Statewide Totals for Law Enforcement Agencies  
January 2014 - December 2014**

Agency	White			Black			Indian			Asian			Unknown			Total		
	Non Hispanic	Hispanic	Total	Non Hispanic	Hispanic	Total	Non Hispanic	Hispanic	Total	Non Hispanic	Hispanic	Total	Non Hispanic	Hispanic	Total	Non Hispanic	Hispanic	Total
State County Sheriffs	24,533	4,822	29,355	10,660	138	10,798	63	6	69	142	8	150	3,034	442	3,476	38,432	5,416	43,848
Municipal Law Enforcement Agencies	20,697	6,579	27,276	10,574	305	10,879	32	6	38	385	5	390	2,515	366	2,881	34,203	7,261	41,464
State Law Enforcement Agencies	39,542	2,134	41,676	15,293	104	15,397	97	2	99	489	0	489	8,400	15,829	24,229	63,821	18,069	81,890
State University Law Enforcement Agencies	596	72	668	311	1	312	3	1	4	10	0	10	3	0	3	923	74	997
<b>Statewide Total</b>	<b>85,368</b>	<b>13,607</b>	<b>98,975</b>	<b>36,838</b>	<b>548</b>	<b>37,386</b>	<b>195</b>	<b>15</b>	<b>210</b>	<b>1,026</b>	<b>13</b>	<b>1,039</b>	<b>13,952</b>	<b>16,637</b>	<b>30,589</b>	<b>137,379</b>	<b>30,820</b>	<b>168,199</b>

**Statewide Totals for Law Enforcement Agencies  
January 2013 - December 2013**

Agency	White			Black			Indian			Asian			Unknown			Total		
	Non Hispanic	Hispanic	Total	Non Hispanic	Hispanic	Total	Non Hispanic	Hispanic	Total	Non Hispanic	Hispanic	Total	Non Hispanic	Hispanic	Total	Non Hispanic	Hispanic	Total
State County Sheriffs	26,934	6,221	33,155	10,162	155	10,317	134	92	226	173	0	173	910	121	1,031	38,313	6,589	44,902
Municipal Law Enforcement Agencies	29,549	8,809	38,358	14,427	452	14,879	32	1	33	531	0	531	511	293	804	45,050	9,555	54,605
State Law Enforcement Agencies	40,518	2,489	43,007	15,148	135	15,283	102	2	104	435	0	435	13,466	15,960	29,426	69,669	18,586	88,255
State University Law Enforcement Agencies	456	45	501	208	0	208	14	0	14	13	0	13	7	0	7	698	45	743
<b>Statewide Total</b>	<b>97,457</b>	<b>17,564</b>	<b>115,021</b>	<b>39,845</b>	<b>742</b>	<b>40,687</b>	<b>282</b>	<b>95</b>	<b>377</b>	<b>1,152</b>	<b>0</b>	<b>1,152</b>	<b>14,894</b>	<b>16,374</b>	<b>31,268</b>	<b>153,730</b>	<b>34,775</b>	<b>188,505</b>

**Department of Highway Safety and Motor Vehicles  
Seat Belt Violation Data Collection System 316.614(9), F.S.**

**State County Sheriffs' Law Enforcement Agencies  
January 2014 – December 2014**

Agency	White			Black			Indian			Asian			Unknown			Total		
	Non Hispanic	Hispanic	Total	Non Hispanic	Hispanic	Total	Non Hispanic	Hispanic	Total	Non Hispanic	Hispanic	Total	Non Hispanic	Hispanic	Total	Non Hispanic	Hispanic	Total
Alachua Co. S.O.	167	13	180	58	1	59	0	0	0	2	0	2	37	0	37	264	14	278
Baker County S.O.	56	0	56	16	0	16	0	0	0	0	0	0	2	0	2	74	0	74
Brevard County S.O.	139	7	146	35	0	35	0	0	0	0	0	0	4	0	4	178	7	185
Broward County S.O.	1,205	547	1,752	1,357	21	1,378	1	2	3	21	0	21	34	10	44	2,618	580	3,198
Citrus County S.O.	28	0	28	3	0	3	0	0	0	0	0	0	0	0	0	31	0	31
Collier County S.O.	766	993	1,759	321	9	330	6	1	7	21	6	27	3	1	4	1,117	1,010	2,127
DeSoto County S.O.	4	0	4	0	0	0	0	0	0	0	0	0	0	0	0	4	0	4
Flagler County S.O.	242	26	268	43	0	43	2	0	2	1	0	1	4	0	4	292	26	318
Glades County S.O.	63	32	95	13	0	13	1	0	1	0	0	0	1	0	1	78	32	110
Hamilton County S.O.	2	0	2	2	0	2	0	0	0	0	0	0	0	0	0	4	0	4
Hardee County S.O.	25	23	48	7	0	7	0	0	0	1	0	1	0	0	0	33	23	56
Hernando County S.O.	889	43	932	58	0	58	0	0	0	5	0	5	1	0	1	953	43	996
Highlands County S.O.	40	9	49	19	0	19	0	0	0	0	0	0	0	0	0	59	9	68
Hillsborough County S.O.	1,863	780	2,643	815	20	835	3	0	3	14	0	14	6	1	7	2,701	801	3,502
Lake County S.O.	265	17	282	59	0	59	0	0	0	1	0	1	1	12	13	326	29	355
Lee County S.O.	1,708	184	1,892	196	0	196	3	0	3	10	0	10	145	42	187	2,062	226	2,288
Leon County S.O.	72	0	72	85	3	88	0	0	0	0	0	0	1	1	2	158	4	162

Agency	White			Black			Indian			Asian			Unknown			Total		
	Non Hispanic	Hispanic	Total	Non Hispanic	Hispanic	Total	Non Hispanic	Hispanic	Total	Non Hispanic	Hispanic	Total	Non Hispanic	Hispanic	Total	Non Hispanic	Hispanic	Total
Manatee County S.O.	431	68	499	103	0	103	0	0	0	2	0	2	2	0	2	538	68	606
Marion County S.O.	34	3	37	15	0	15	1	0	1	0	0	0	32	0	32	82	3	85
Martin County S.O.	178	79	257	50	0	50	1	0	1	0	0	0	0	0	0	229	79	308
Miami-Dade County S.O.	4,551	0	4,551	1,897	0	1,897	3	0	3	6	0	6	2,477	0	2,477	8,934	0	8,934
Monroe County S.O.	681	157	838	63	4	67	0	0	0	2	0	2	0	0	0	746	161	907
Nassau County S.O.	1,056	46	1,102	189	0	189	0	0	0	1	0	1	0	0	0	1,246	46	1,292
Okeechobee County S.O.	188	29	197	7	2	9	1	2	3	1	0	1	2	1	3	179	34	213
Orange County S.O.	2,692	1,398	4,090	3,011	66	3,077	16	1	17	15	0	15	177	68	245	5,911	1,533	7,444
Palm Beach County S.O.	1,487	73	1,560	1,118	10	1,128	4	0	4	24	2	26	59	11	70	2,692	96	2,788
Pasco County S.O.	702	95	797	55	0	55	1	0	1	6	0	6	22	2	24	786	97	883
Pinellas County S.O.	3	0	3	0	0	0	0	0	0	0	0	0	0	0	0	3	0	3
Polk County S.O.	1,513	32	1,545	417	1	418	19	0	19	7	0	7	5	293	298	1,961	326	2,287
Putnam County S.O.	50	4	54	20	0	20	0	0	0	0	0	0	0	0	0	70	4	74
St. Lucie County S.O.	204	53	257	130	1	131	1	0	1	1	0	1	3	0	3	339	54	393
Suwannee County S.O.	4	1	5	1	0	1	0	0	0	0	0	0	0	0	0	5	1	6
Volusia County S.O.	3,183	93	3,276	485	0	485	0	0	0	0	0	0	16	0	16	3,684	93	3,777
Walton County S.O.	38	5	43	5	0	5	0	0	0	1	0	1	0	0	0	44	5	49
<b>Statewide Total</b>	<b>24,533</b>	<b>4,822</b>	<b>29,355</b>	<b>10,660</b>	<b>138</b>	<b>10,798</b>	<b>63</b>	<b>6</b>	<b>69</b>	<b>142</b>	<b>8</b>	<b>150</b>	<b>3,034</b>	<b>442</b>	<b>3,476</b>	<b>38,432</b>	<b>5,416</b>	<b>43,848</b>

**Department of Highway Safety and Motor Vehicles  
Seat Belt Violation Data Collection System 316.614(9), F.S.**

**State Municipal Law Enforcement Agencies  
January 2014 - December 2014**

Agency	White			Black			Indian			Asian			Unknown			Total		
	Non Hispanic	Hispanic	Total	Non Hispanic	Hispanic	Total	Non Hispanic	Hispanic	Total	Non Hispanic	Hispanic	Total	Non Hispanic	Hispanic	Total	Non Hispanic	Hispanic	Total
Alachua P.D.	441	12	453	81	1	82	0	0	0	3	0	3	0	2	2	525	15	540
Altamonte Springs P.D.	151	135	286	80	0	80	0	0	0	6	0	6	3	0	3	240	135	375
Atlantis P.D.	9	11	20	6	0	6	0	0	0	0	0	0	0	0	0	15	11	26
Auburndale P.D.	67	4	71	7	0	7	0	0	0	0	0	0	0	0	0	74	4	78
Aventura P.D.	804	472	1,276	498	9	507	1	1	2	10	0	10	0	0	0	1,313	482	1,795
Belleview P.D.	171	0	171	19	0	19	0	0	0	0	0	0	1	13	14	191	13	204
Boca Raton P.D.	733	121	854	154	0	154	1	0	1	39	0	39	8	0	8	935	121	1,056
Boynton Beach P.D.	10	3	13	30	0	30	0	0	0	0	0	0	57	20	77	97	23	120
Bradenton P.D.	191	42	233	47	0	47	0	0	0	3	0	3	0	0	0	241	42	283
Bunnell P.D.	102	9	111	26	0	26	0	0	0	0	0	0	0	0	0	128	9	137
Casselberry P.D.	466	147	613	116	2	118	2	1	3	3	0	3	23	2	25	610	152	762
Chiefland P.D.	2	0	2	1	0	1	0	0	0	0	0	0	2	0	2	5	0	5
Cleawater P.D.	230	23	253	67	0	67	1	0	1	4	0	4	10	29	39	312	52	364
Clermont P.D.	77	20	97	13	0	13	2	0	2	0	0	0	1	0	1	93	20	113
Cocoa Beach P.D.	210	0	210	11	0	11	0	0	0	0	0	0	0	0	0	221	0	221
Cocoa P.D.	98	15	113	96	0	96	0	0	0	0	0	0	5	1	6	199	16	215
Davie P.D.	354	159	513	124	0	124	0	0	0	7	0	7	0	0	0	485	159	644

Agency	White			Black			Indian			Asian			Unknown			Total		
	Non Hispanic	Hispanic	Total	Non Hispanic	Hispanic	Total	Non Hispanic	Hispanic	Total	Non Hispanic	Hispanic	Total	Non Hispanic	Hispanic	Total	Non Hispanic	Hispanic	Total
Daytona Beach Shores P.D.	450	24	474	41	0	41	0	0	0	2	0	2	2	0	2	495	24	519
Deland P.D.	135	11	146	54	0	54	0	0	0	0	0	0	3	0	3	192	11	203
Delray Beach P.D.	392	0	392	198	0	198	0	0	0	4	0	4	13	0	13	607	0	607
Edgewater P.D.	55	0	55	21	0	21	0	0	0	0	0	0	0	0	0	76	0	76
Eustis P.D.	115	0	115	21	0	21	0	0	0	0	0	0	0	0	0	136	0	136
Fernandina Beach P.D.	105	3	108	9	0	9	0	0	0	0	0	0	0	0	0	114	3	117
Ft. Lauderdale P.D.	225	39	264	539	6	545	0	0	0	0	0	0	0	0	0	764	45	809
Ft. Myers P.D.	555	182	737	409	0	409	1	0	1	16	0	16	464	97	561	1,445	279	1,724
Ft. Pierce P.D.	181	12	193	318	8	326	1	0	1	0	0	0	15	0	15	515	20	535
Ft. Walton Beach P.D.	22	0	22	5	0	5	0	0	0	1	0	1	0	0	0	28	0	28
Gulfport P.D.	75	2	77	23	1	24	0	0	0	0	0	0	1	2	3	99	5	104
Holly Hills P.D.	80	0	80	26	0	26	0	0	0	0	0	0	25	0	25	131	0	131
Hollywood P.D.	539	257	796	353	2	355	3	0	3	6	0	6	29	0	29	930	259	1,189
Holmes Beach P.D.	117	8	125	5	0	5	1	0	1	2	0	2	24	10	34	149	18	167
Indianlantic P.D.	103	17	120	16	0	16	0	0	0	5	0	5	2	0	2	126	17	143
Indian Harbor Beach P.D.	51	1	52	2	0	2	0	0	0	1	0	1	0	0	0	54	1	55
Indian River Shores P.D.	24	4	28	0	0	0	0	0	0	0	0	0	0	0	0	24	4	28
Indian Shores P.D.	34	2	36	0	0	0	0	0	0	0	0	0	0	0	0	34	2	36
Jacksonville Beach P.D.	300	19	319	168	0	168	1	0	1	0	0	0	0	0	0	469	19	488



Agency	White			Black			Indian			Asian			Unknown			Total		
	Non Hispanic	Hispanic	Total	Non Hispanic	Hispanic	Total	Non Hispanic	Hispanic	Total	Non Hispanic	Hispanic	Total	Non Hispanic	Hispanic	Total	Non Hispanic	Hispanic	Total
Jupiter P.D.	210	34	244	27	0	27	1	0	1	4	0	4	0	0	0	242	34	276
Kissimmee P.D.	561	983	1,544	264	1	265	7	2	9	64	0	64	0	0	0	896	986	1,882
Lake City P.D.	152	4	156	64	0	64	0	0	0	0	0	0	3	0	3	219	4	223
Lake Hamilton P.D.	32	9	41	11	0	11	0	0	0	0	0	0	0	0	0	43	9	52
Lakeland P.D.	613	104	717	360	0	360	0	0	0	16	0	16	0	0	0	989	104	1,093
Lantana P.D.	96	18	114	57	0	57	0	0	0	1	0	1	0	0	0	154	18	172
Largo P.D.	673	114	787	164	0	164	1	0	1	5	0	5	17	0	17	860	114	974
Lee Co. Port Auth. P.D.	11	77	88	2	4	6	0	0	0	0	0	0	0	0	0	13	81	94
Leesburg P.D.	651	55	706	287	1	288	1	0	1	9	1	10	0	0	0	948	57	1,005
Lighthouse Point P.D.	4	2	6	1	1	2	0	0	0	0	0	0	0	0	0	5	3	8
Longwood P.D.	121	47	168	35	2	37	1	0	1	1	0	1	1	0	1	159	49	208
Manalapan P.D.	15	4	19	5	0	5	0	0	0	0	0	0	0	0	0	20	4	24
Margate P.D.	103	8	111	155	0	155	0	0	0	0	0	0	7	0	7	265	8	273
Medley P.D.	5	94	99	5	2	7	0	0	0	0	0	0	1	0	1	11	96	107
Melbourne Airport P.D.	0	0	0	0	0	0	0	0	0	0	0	0	0	0	0	0	0	0
Melbourne Beach P.D.	107	8	115	1	0	1	0	0	0	0	0	0	1	0	1	109	8	117
Melbourne P.D.	162	12	174	53	2	55	0	0	0	10	0	10	1	3	4	226	17	243
Miami Shores P.D.	24	48	72	186	0	186	0	0	0	0	0	0	3	0	3	213	48	261
Miami Springs P.D.	37	207	244	19	3	22	0	0	0	0	0	0	0	0	0	56	210	266

Agency	White			Black			Indian			Asian			Unknown			Total		
	Non Hispanic	Hispanic	Total	Non Hispanic	Hispanic	Total	Non Hispanic	Hispanic	Total	Non Hispanic	Hispanic	Total	Non Hispanic	Hispanic	Total	Non Hispanic	Hispanic	Total
Milton P.D.	583	0	583	49	0	49	0	0	0	0	0	0	0	0	0	632	0	632
Miramar P.D.	69	226	295	464	0	464	2	0	2	3	0	3	24	0	24	552	226	788
Naples P.D.	66	22	88	10	1	11	0	0	0	3	1	4	24	0	24	103	24	127
Neptune Beach P.D.	34	2	36	3	0	3	0	0	0	1	0	1	0	0	0	38	2	40
Niceville P.D.	123	12	135	5	0	5	0	0	0	3	0	3	0	0	0	131	12	143
North Miami Beach P.D.	96	103	199	133	0	133	0	0	0	5	0	5	0	0	0	234	103	337
North Miami P.D.	64	116	180	666	12	678	0	0	0	3	0	3	4	0	4	737	128	865
North Port P.D.	96	4	100	5	0	5	0	0	0	2	0	2	0	0	0	103	4	107
Oakland P.D.	54	16	70	22	0	22	0	0	0	5	0	5	2	1	3	83	17	100
Ocala P.D.	180	297	487	85	190	275	0	0	0	1	0	1	0	62	62	276	549	825
Ocean Ridge P.D.	41	3	44	3	0	3	0	0	0	0	0	0	0	0	0	44	3	47
Ocoee P.D.	63	27	90	44	0	44	0	0	0	4	0	4	0	0	0	111	27	138
Orange City P.D.	84	30	114	15	0	15	0	0	0	0	0	0	22	4	26	121	34	155
Orlando P.D.	302	92	394	447	10	457	1	0	1	23	2	25	70	85	155	843	189	1,032
Ormond Beach P.D.	366	2	368	24	0	24	0	0	0	0	0	0	9	0	9	399	2	401
Oviedo P.D.	128	34	162	21	0	21	0	0	0	1	0	1	1	1	2	151	35	186
Palm Bay P.D.	121	18	139	50	2	52	0	0	0	3	0	3	0	0	0	174	20	194
Palm Beach Co. School P.D.	9	2	11	11	0	11	0	0	0	0	0	0	0	0	0	20	2	22
Palm Beach Gardens P.D.	69	9	78	24	0	24	0	0	0	3	0	3	0	0	0	96	9	105

Agency	White			Black			Indian			Asian			Unknown			Total		
	Non Hispanic	Hispanic	Total	Non Hispanic	Hispanic	Total	Non Hispanic	Hispanic	Total	Non Hispanic	Hispanic	Total	Non Hispanic	Hispanic	Total	Non Hispanic	Hispanic	Total
Palm Beach P.D.	32	18	50	3	0	3	0	0	0	1	0	1	0	0	0	36	18	54
Palmetto P.D.	196	24	220	48	0	48	0	0	0	0	0	0	0	0	0	244	24	268
Panama City Beach P.D.	167	1	168	66	0	66	0	0	0	4	0	4	1	0	1	238	1	239
Panama City P.D.	391	0	391	117	0	117	0	0	0	5	0	5	3	15	18	516	15	531
Pembroke Pines P.D.	568	736	1,304	713	12	725	3	0	3	48	0	48	15	8	23	1,347	756	2,103
Pensacola P.D.	69	0	69	67	0	67	0	0	0	0	0	0	44	0	44	180	0	180
Plant City P.D.	293	165	458	38	0	38	0	0	0	0	0	0	8	0	8	339	165	504
Port Orange P.D.	663	11	674	50	0	50	0	0	0	0	0	0	2	0	2	715	11	726
Port St. Lucie P.D.	226	263	489	83	2	85	0	2	2	3	0	3	1,455	4	1,459	1,767	271	2,038
Punta Gorda P.D.	38	6	44	8	0	8	0	0	0	0	0	0	0	0	0	46	6	52
Sarasota P.D.	700	47	747	211	0	211	0	0	0	1	0	1	12	0	12	924	47	971
Sarasota-Manatee Airport P.D.	0	0	0	0	0	0	0	0	0	0	0	0	0	0	0	0	0	0
Satellite Beach P.D.	164	0	164	8	0	8	0	0	0	0	0	0	2	0	2	174	0	174
Sebastian P.D.	14	1	15	3	0	3	0	0	0	0	0	0	0	0	0	17	1	18
Sebring P.D.	25	8	33	5	0	5	0	0	0	0	0	0	0	0	0	30	8	38
Seminole Indian Tribal P.D.	2	0	2	1	0	1	0	0	0	0	0	0	0	0	0	3	0	3
Seminole P.D.	4	2	6	4	0	4	0	0	0	0	0	0	0	0	0	8	2	10
South Daytona P.D.	343	11	354	141	0	141	0	0	0	3	0	3	15	0	15	502	11	513
St. Augustine P.D.	657	4	661	124	0	124	0	0	0	3	0	3	16	0	16	800	4	804

Agency	White			Black			Indian			Asian			Unknown			Total		
	Non Hispanic	Hispanic	Total	Non Hispanic	Hispanic	Total	Non Hispanic	Hispanic	Total	Non Hispanic	Hispanic	Total	Non Hispanic	Hispanic	Total	Non Hispanic	Hispanic	Total
Sunrise P.D.	299	153	452	674	13	687	0	0	0	5	1	6	13	2	15	991	169	1,160
Temple Terrace P.D.	400	119	519	377	13	390	1	0	1	3	0	3	6	0	6	787	132	919
Venice P.D.	42	0	42	0	0	0	0	0	0	12	0	12	11	0	11	65	0	65
Wauchula P.D.	94	40	134	16	0	16	0	0	0	0	0	0	1	1	2	111	41	152
West Melbourne P.D.	208	12	220	41	0	41	0	0	0	4	0	4	8	0	8	261	12	273
Wildwood P.D.	11	1	12	10	0	10	0	0	0	0	0	0	0	0	0	21	1	22
Wilton Manors P.D.	68	22	90	56	1	57	0	0	0	1	0	1	1	0	1	126	23	149
Winter Gardens P.D.	291	160	451	165	3	168	0	0	0	4	0	4	21	2	23	481*	165	646
Winter Haven P.D.	161	36	197	82	0	82	0	0	0	1	0	1	0	0	0	244	36	280
Winter Park P.D.	332	72	404	64	1	65	0	0	0	4	0	4	1	1	2	401	74	475
Winter Springs P.D.	137	46	183	23	0	23	0	0	0	1	0	1	2	1	3	163	47	210
Zephyrhills P.D.	293	24	317	15	0	15	0	0	0	0	0	0	0	0	0	308	24	332
<b>Statewide Total</b>	<b>20,697</b>	<b>6,579</b>	<b>27,276</b>	<b>10,574</b>	<b>305</b>	<b>10,879</b>	<b>32</b>	<b>6</b>	<b>38</b>	<b>385</b>	<b>5</b>	<b>390</b>	<b>2,515</b>	<b>366</b>	<b>2,881</b>	<b>34,203</b>	<b>7,261</b>	<b>41,464</b>

**Department of Highway Safety and Motor Vehicles  
Seat Belt Violation Data Collection System 316.614(9), F.S.**

**State Law Enforcement Agencies  
January 2014 - December 2014**

Agency	White			Black			Indian			Asian			Unknown			Total		
	Non Hispanic	Hispanic	Total	Non Hispanic	Hispanic	Total	Non Hispanic	Hispanic	Total	Non Hispanic	Hispanic	Total	Non Hispanic	Hispanic	Total	Non Hispanic	Hispanic	Total
Dept. of Consumer Services	1	3	4	1	0	1	0	0	0	0	0	0	0	0	0	2	3	5
Florida Highway Patrol	39,541	2,131	41,672	15,292	104	15,396	97	2	99	489	0	489	8,400	15,829	24,229	63,819	18,066	81,885
<b>Statewide Total</b>	<b>39,542</b>	<b>2,134</b>	<b>41,676</b>	<b>15,293</b>	<b>104</b>	<b>15,397</b>	<b>97</b>	<b>2</b>	<b>99</b>	<b>489</b>	<b>0</b>	<b>489</b>	<b>8,400</b>	<b>15,829</b>	<b>24,229</b>	<b>63,821</b>	<b>18,069</b>	<b>81,890</b>

**Department of Highway Safety and Motor Vehicles  
Seat Belt Violation Data Collection System 316.614(9), F.S.**

**State University Law Enforcement Agencies  
January 2014 - December 2014**

Agency	White			Black			Indian			Asian			Unknown			Total		
	Non Hispanic	Hispanic	Total	Non Hispanic	Hispanic	Total	Non Hispanic	Hispanic	Total	Non Hispanic	Hispanic	Total	Non Hispanic	Hispanic	Total	Non Hispanic	Hispanic	Total
F.A.M.U. P.D.	1	0	1	10	0	10	0	0	0	0	0	0	0	0	0	11	0	11
Florida State University P.D.	254	16	270	166	0	166	3	0	3	0	0	0	1	0	1	424	16	440
New College of Florida P.D.	0	0	0	0	0	0	0	0	0	0	0	0	0	0	0	0	0	0
Univ. of Central Florida P.D.	138	44	182	48	1	49	0	0	0	3	0	3	2	0	2	191	45	236
Univ. of North Florida P.D.	170	5	175	74	0	74	0	1	1	3	0	3	0	0	0	247	6	253
Univ. of South Florida P.D.	33	7	40	13	0	13	0	0	0	4	0	4	0	0	0	50	7	57
<b>Statewide Total</b>	<b>596</b>	<b>72</b>	<b>668</b>	<b>311</b>	<b>1</b>	<b>312</b>	<b>3</b>	<b>1</b>	<b>4</b>	<b>10</b>	<b>0</b>	<b>10</b>	<b>3</b>	<b>0</b>	<b>3</b>	<b>923</b>	<b>74</b>	<b>997</b>