

Florida

TRAFFIC SAFETY FACTS

October 2010

PEDESTRIANS



Report Compiled by the
Florida Department of
Highway Safety and Motor Vehicles



2009 Florida Quick Facts:

Definitions:

Pedestrian – A person traveling by foot; a walker. A pedestrian is defined as any person not in or upon a motor vehicle or other vehicle.

Rate (per 100,000 Population)

- Pedestrians Fatality Rate..... 2.56
- Pedestrians Injury Rate..... 40.78

Alcohol-Related Fatalities

- Drinking Pedestrians in Fatal Crashes 40.4%

	Crashes	Fatalities	Injuries
All	235,778	2,563	197,214
2009 Pedestrians	8,248	482	7,676
Percent Of All	3.5%	18.8%	3.9%
2008 Pedestrians	8,471	502	7,878
Percent Change	(2.6%)	(4%)	(2.6%)



Executive Summary

The first pedestrian traffic fatality in the United States occurred on September 13, 1899. Henry H. Bliss, a 68-year old real estate broker, was knocked down and run over at Central Park West and 74th Street in New York City. Since then, automobile crashes have killed more than 738,000 pedestrians – more than the number of Americans killed in both World Wars. In 2009, 482 pedestrians were killed in Florida and an additional 7,676 were injured in traffic crashes, which is approximately 19 percent of all traffic fatalities and 4 percent of all injuries during the year. With a growing population, 900 new residents per day, 85 million visitors, Florida's temperature and year-round climate along with beautiful beaches, pedestrians exposure to crashes is ever growing.

What is the definition of a pedestrian fatality?

■ A traffic crash that results in one or more fatalities within thirty days of occurrence of a pedestrian which is a person traveling by foot; a walker. A pedestrian is further defined as any person not in or upon a motor vehicle or other vehicle.

Who are our pedestrian fatalities?

- In 2009, fatalities of people age 35 to 54 account for 37% of all pedestrian fatalities.
- Twenty percent of pedestrians killed fall into the 55 to 74 year old category.
- Eighteen percent of pedestrian fatalities were ages 20 to 34.
- Our older citizens, 75 years old and older, account for 11% of the fatalities.
- Teenager's under the age of 19 make up 10% of pedestrian fatalities.
- Approximately 70% of all pedestrian fatalities were male and approximately 30% were female.

What types of roadways are involved in pedestrian fatalities?

- Four-lane highways claim the lives of pedestrians more than any other roadway, at almost 38%.
- Six-lane roadways are responsible for just over 28% of pedestrian fatalities.
- Almost 22% of pedestrian fatalities take place on two-lane roadways.

What particular actions are pedestrians taking when they are killed?

- Forty-eight percent of pedestrians are killed when crossing the road, but not at an intersection.
- Just over 13% of pedestrians are killed when crossing the road at an intersection.
- Six percent of pedestrians are killed while walking along the road with traffic.

What day of the week and month of the year is the most deadly for pedestrians?

- December and November tied as the deadliest month of the year for pedestrians, with 12.2% of all fatalities occurring each month.
- October accounted for 11.4% of the pedestrian fatalities.
- Saturday is the most deadly day for pedestrians with 19.7% of fatalities occurring on this day.
- Pedestrian fatalities on Friday was right behind Saturday with 19.3% of all pedestrian fatalities occurring on this day.

Are pedestrians being killed more during the day or at night?

- Forty-three percent of pedestrians killed in a traffic crash, die when it is dark, but the street is illuminated.
- Thirty-two percent of pedestrians die from a traffic crash when it is dark and no light present.
- Just over 20% of fatalities of pedestrians die in crashes when it is light outside.

Are there other factors that contribute to a pedestrian being killed in Florida?

Yes, alcohol is a factor in just over 40% of pedestrian fatalities. Of the 482 pedestrian fatalities in 2009, 195 of them had been drinking prior to the fatal crash.

What counties in Florida have the highest number of pedestrian fatalities?

Of course, the largest counties have the highest number of pedestrian fatalities. The statewide pedestrian fatality rate is approximately 2.6 fatalities per every 100,000 people. The following counties accounted for 244 pedestrian fatalities, or

(continued)



Executive Summary *(continued)*

over half of the state's 482 recorded fatalities: Miami-Dade-65 (rate-2.6), Broward-46 (rate-2.6) Palm Beach-39 (rate-3.0), Orange-32 (rate-2.9), Hillsborough-32 (rate-2.7) and Pinellas-30 (rate-3.2).

Why does Florida have a high pedestrian fatality rate?

There has been much debate over this question and most agree there are three contributing causes:

■ **Population Growth** – Florida has almost seven times as many people as in 1950, from 2.8 million to 18.5 million. The roadways were built to accommodate a lot of traffic and get cars and trucks from point A to B, and not necessarily concentrate on pedestrian traffic.

■ **Tourism** – In 2009 approximately 80.3 million visitors came to Florida, according to Visit Florida, the state's official tourism marketing corporation.

■ **Climate** – Because the weather in most of Florida is balmy year-round, people tend to spend more time outside, increasing their risk.

Over the last ten years, are pedestrian fatalities increasing or decreasing?

Between 2000 and 2009, 5,149 pedestrians have died on Florida highways with the year 2005 having the greatest number with 576 fatalities. Over the last ten years, Florida's population has increased by 17.7 percent, however, between the last five years, pedestrian fatalities have decreased by 16%. In 2009, 18.8% of all traffic fatalities were pedestrians for a total of 482 pedestrians killed.

Why pedestrian fatalities have gone down in Florida over the last five years?

There is no clear answer, however, between better engineered roadways and intersections, and an increased focus on pedestrians, along with increased enforcement of pedestrian traffic laws, Florida is pleased with the trend to reduce pedestrian fatalities.



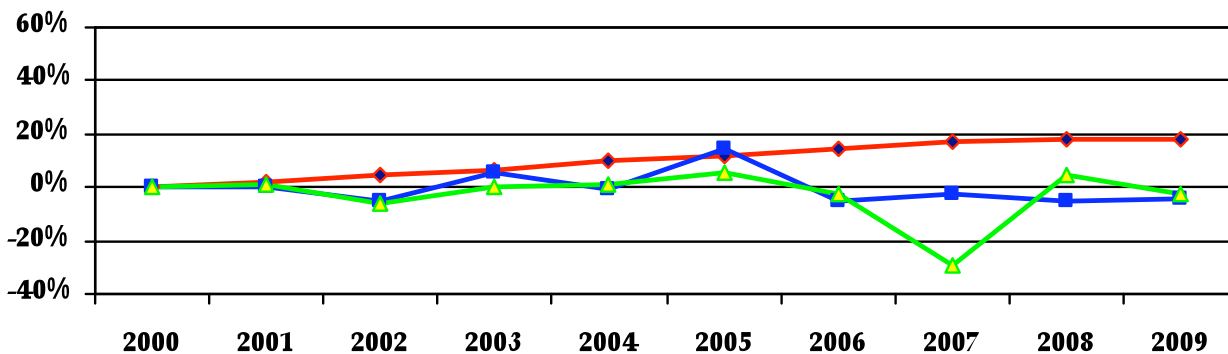
Ten-Year History (2000-2009)

During the last ten years, 5,149 pedestrians have died on Florida highways and an additional 76,935 have been injured.

Pedestrian fatalities have decreased by twenty, or 4.0 percent as the state's population has increased 17.7 percent.

Year	Florida Population		Fatalities		Injuries	
	#	% Change	#	% Change	#	% Change
2000	15,982,824		506		7,782	
2001	16,330,224	2.17	510	.79	7,894	1.4
2002	16,674,608	4.3	484	-5.1	7,447	-5.7
2003	17,071,508	6.8	509	5.2	7,449	.027
2004	17,516,732	9.6	504	-1.0	7,551	1.4
2005	17,872,296	11.8	576	14.3	7,975	5.6
2006	18,349,132	14.8	546	-5.2	7,754	-2.8
2007	18,680,367	16.9	530	-2.9	7,529	-2.9
2008	18,807,219	17.7	502	-5.3	7,878	4.6
2009	18,818,998	17.7	482	-4.0	7,676	-2.6

Cumulative Percentage Change Since 2000



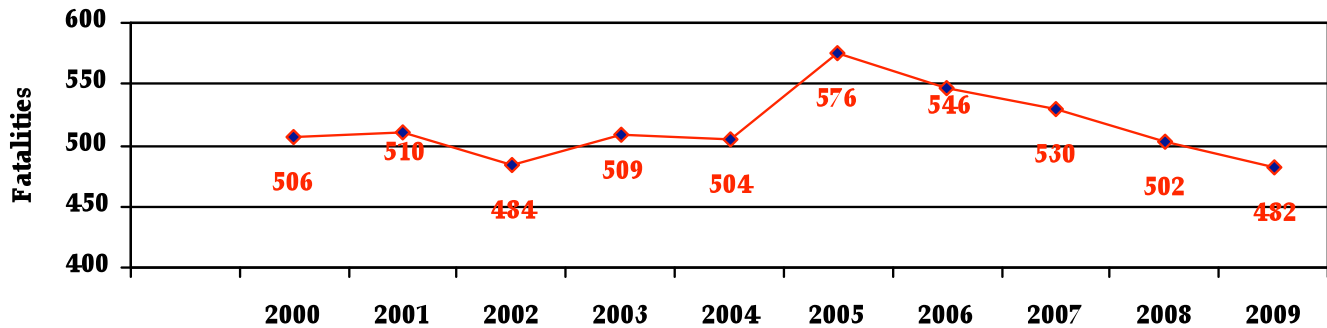
◆ Population
 ■ Fatalities
 ▲ Injuries



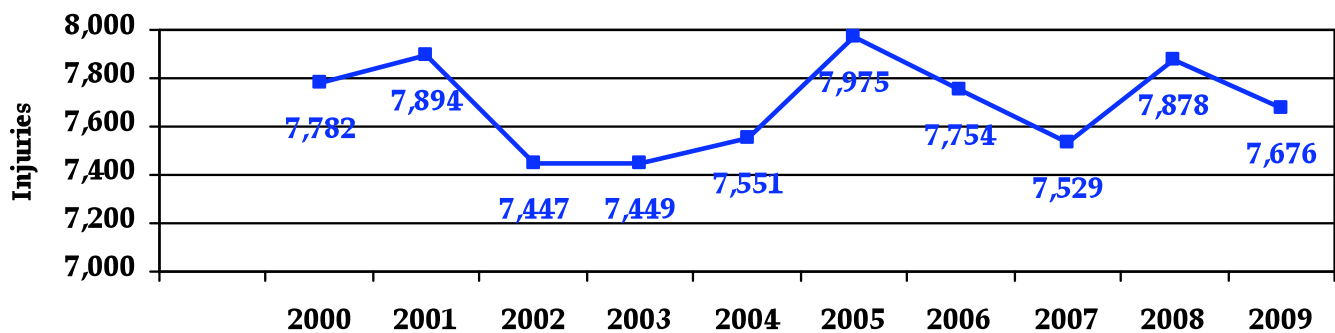
Pedestrian Fatalities and Injuries: During this ten-year period, pedestrian fatalities have decreased. In 2009, the lowest number of fatalities (482) were reported and 2005 had

the highest with 576 fatalities. During this same time, the injuries have increased with 2005 having the highest number of injuries (7,975) and 2002 having the lowest (7,447).

Pedestrian Fatalities (2000 - 2009)



Pedestrian Injuries (2000 - 2009)



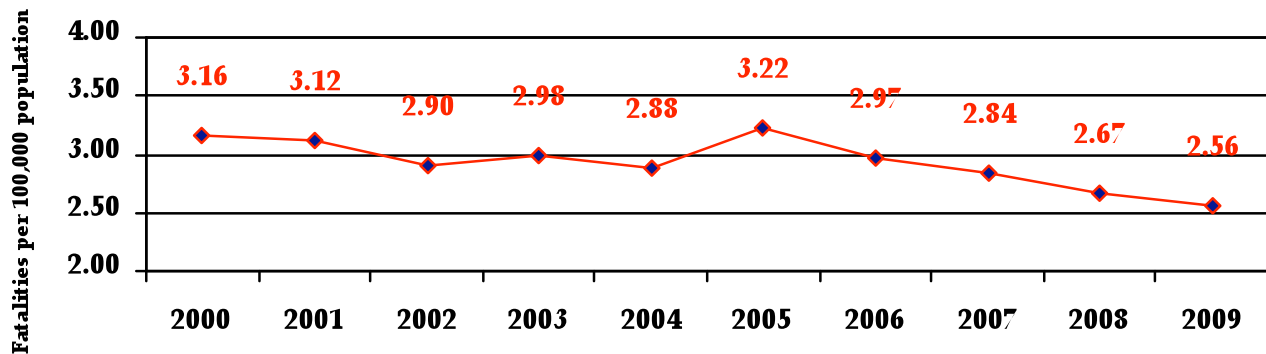
Pedestrian Fatality and Injury Rates:

During this ten-year period, the pedestrian fatality rate ranged from 2.56 to 3.22 fatalities per 100,000 population.

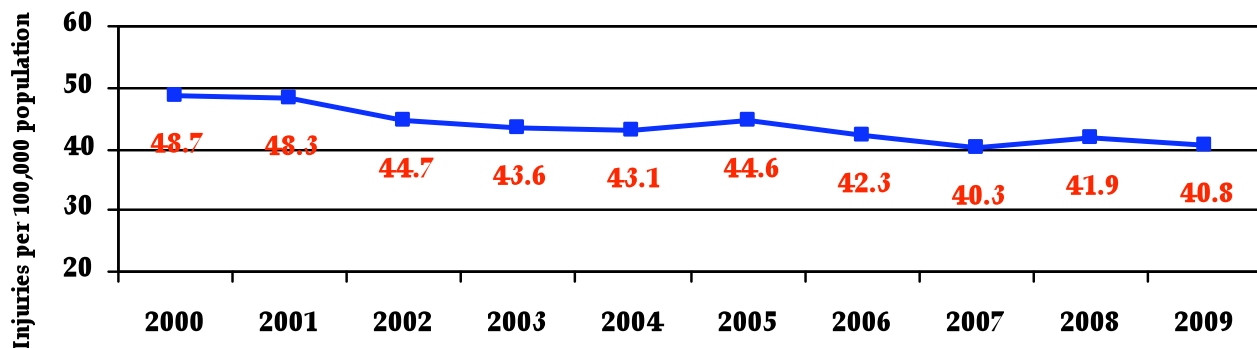
During this same time, the pedestrian injury rate has decreased from 48.69 injuries per 100,000 population in 2000 to 40.79 injuries per 100,000 population in 2009.

Year	Population	Fatalities		Injuries	
		#	Rate	#	Rate
2000	15,982,824	506	3.16	7,782	48.69
2001	16,330,224	510	3.12	7,894	48.34
2002	16,674,608	484	2.90	7,447	44.66
2003	17,071,508	509	2.98	7,449	43.63
2004	17,516,732	504	2.88	7,551	43.11
2005	17,872,296	576	3.22	7,975	44.62
2006	18,349,132	546	2.97	7,754	42.26
2007	18,680,367	530	2.84	7,529	40.30
2008	18,807,219	502	2.67	7,878	41.89
2009	18,818,998	482	2.56	7,676	40.79

Pedestrian Fatality Rate (per 100,000 Population)



Pedestrian Injury Rate (per 100,000 Population)



Pedestrian Characteristics

Lighting Conditions for Fatalities

Forty-three percent of fatal pedestrian crashes occurred while the road was dark, but illuminated by a street light.

	Light Condition						Total
	Dawn	Daylight	Dusk	Dark (Street Light)	Dark (No Light)	Unknown	
Pedestrian Fatalities	10	100	8	207	156	1	482
% of Total	2%	20.7%	1.7%	43%	32.4%	0.20%	100%

Day of the week of Fatalities

Saturday had the largest percentage of fatal pedestrian crashes with almost 20 percent.

	Days of Week							Total
	Mon.	Tues.	Wed.	Thurs.	Fri.	Sat.	Sun.	
Pedestrian Crashes	51	54	55	75	93	95	59	482
% of Total	10.6%	11.2%	11.4%	15.6%	19.3%	19.7%	12.2%	100%

Month of the Year of Fatalities

September, October, and November each had over ten percent of the fatal pedestrian crashes.

	Months of Year												Total
	J	F	M	A	M	J	J	A	S	O	N	D	
Pedestrian Crashes	45	40	35	36	24	35	33	32	29	55	59	59	482
% of Total	9.3%	8.3%	7.3%	7.5%	5.0%	7.3%	6.8%	6.7%	6.0%	11.4%	12.2%	12.20%	100%

Number of Roadway Lanes of Fatalities

Almost 38 percent of fatal pedestrian crashes occurred on four-lane roadways and 28 percent occurred on six-lane roadways.

	# of Roadway Lane									Total
	1	2	3	4	5	6	7	8+		
Pedestrian Crashes	1	101	8	181	9	137	3	39	482	
% of Total	.2%	21.6%	1.7%	37.6%	1.9%	28.4%	.6%	8.0%	100%	



Pedestrian Characteristics: *(continued)*

Alcohol-Under Influence Involvement

Of the 482 pedestrian fatalities in 2009, 195 (40.46%) had been drinking prior to the fatal crash.

Fatalities	2009
Drinking Pedestrians Fatalities	195
Pedestrian Fatalities	482
% Drinking Pedestrians	40.46%

Pedestrian's Age

During the time-period of 2005 through 2009:

- Ten percent of pedestrian fatalities were under the age of 19.
- Eighteen percent of pedestrian fatalities were ages 20 to 34 years old.

- Thirty-seven percent of pedestrian fatalities were ages 35 to 54 years old.
- Twenty percent of pedestrian fatalities were ages 55 to 74 years old.
- Eleven percent of pedestrian fatalities were 75 years old and older.

Pedestrian Fatalities by Age Group

Age Group	Year					% of 5 Yr. Total
	2005	2006	2007	2008	2009	
0-4	8	10	9	8	5	2%
5-9	11	7	7	6	5	1%
10-14	9	8	14	8	8	2%
15-19	26	26	30	27	23	5%
20-24	52	31	32	27	34	7%
25-34	63	69	64	59	46	11%
35-44	109	88	81	79	78	16%
45-54	101	113	126	111	110	21%
55-64	60	77	46	70	62	12%
65-74	46	33	43	40	50	8%
75-84	54	41	40	36	35	8%
85-89	7	8	13	10	9	2%
90+	7	2	2	6	6	1%
Unknown	23	34	23	15	11	4%
Total	576	547	530	502	482	*

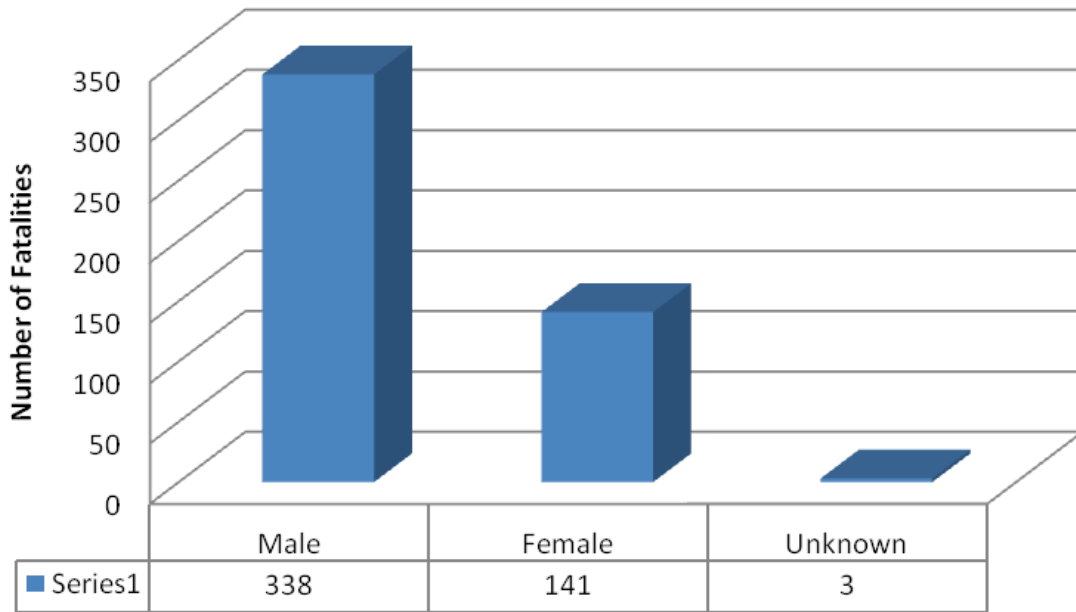


Pedestrian Characteristics: *(continued)*

Pedestrian Fatalities by Gender

During 2009, of the 482 pedestrians killed in fatal crashes, 338 (70.1%) were males and 141 (29.3%) were females. Three (.6%) were unknown.

2009 Pedestrian Fatalities by Gender



Florida Five-Year Trend Data

	2005	2006	2007	2008	2009	% 5-Yr Change
Fatalities:						
Motor Vehicle	3,533	3,365	3,221	2,983	2,563	-27%
Pedestrians	576	546	530	502	482	-16%
Injuries:						
Motor Vehicle	233,930	214,914	212,149	199,658	197,214	-16%
Pedestrians	7,975	7,754	7,529	7,878	7,676	-4%
Crashes:						
Motor Vehicle	268,605	256,200	256,206	243,342	235,778	-12%
Pedestrians	8,626	8,346	8,139	8,471	8,248	-4%
Roadway Miles:						
All Public (Centerline)	120,556	121,995	121,526	121,386	121,446	1%
State System (Centerline)	12,040	12,067	12,062	12,084	12,088	0.4%
State System (Lane)	41,473	41,916	42,082	42,432	42,633	3%
Licensed Drivers:						
	15,272,680	15,491,878	15,579,603	15,556,658	15,553,387	2%
Vehicles Registrations	15,062,993	15,612,161	14,858,332	15,966,287	14,983,437	-1%
Vehicle Miles Traveled (millions)	200,974	203,783	205,421	198,494	196,402	-2%
Population	17,872,296	18,349,132	18,680,367	18,807,219	18,818,998	5%
Tourists	83,600,000	83,900,000	84,500,000	84,200,000	80,900,000	-3%



Pedestrian Fatalities by County

The largest counties have the highest number of pedestrian fatalities. The statewide pedestrian fatality rate is approximately 2.6 fatalities per every 100,000 people. The following counties accounted for 244 pedestrian fatalities, or over half

of the state's 482 recorded fatalities: Miami-Dade-65 (rate-2.6), Broward-46 (rate-2.6) Palm Beach-39 (rate-3.0), Orange-32 (rate-2.9), Hillsborough-32 (rate-2.7) and Pinellas-30 (rate-3.2).

Five-Year Pedestrian Fatality History By County (Florida, 2005-2009)

COUNTY	2005	2006	2007	2008	2009	COUNTY	2005	2006	2007	2008	2009
ALACHUA	7	5	6	2	5	LEE	32	23	19	11	15
BAKER	0	1	0	0	0	LEON	5	2	3	2	6
BAY	8	14	7	6	8	LEVY	1	2	2	1	3
BRADFORD	2	1	0	0	1	LIBERTY	0	0	0	0	0
BREVARD	18	17	10	18	11	MADISON	0	0	0	0	0
BROWARD	41	50	65	51	46	MANATEE	11	5	8	7	13
CALHOUN	0	0	0	0	1	MARION	12	10	12	10	8
CHARLOTTE	6	6	5	4	4	MARTIN	5	7	3	3	6
CITRUS	3	4	3	2	2	MIAMI-DADE	81	90	76	66	65
CLAY	5	3	3	0	2	MONROE	3	4	4	7	4
COLLIER	3	6	7	4	5	NASSAU	2	3	5	2	1
COLUMBIA	3	1	4	4	1	OKALOOSA	6	4	3	1	3
DE SOTO	0	1	1	2	0	OKEECHOBEE	3	4	0	1	1
DIXIE	0	0	0	1	0	ORANGE	42	42	40	28	32
DUVAL	34	26	32	16	25	OSCEOLA	9	1	7	10	5
ESCAMBIA	12	8	8	6	8	PALM BEACH	36	39	33	32	39
FLAGLER	2	0	0	4	1	PASCO	15	24	17	17	13
FRANKLIN	0	1	0	0	0	PINELLAS	31	30	29	25	30
GADSDEN	2	1	4	3	2	POLK	23	18	10	26	17
GILCHRIST	0	0	0	1	0	PUTNAM	4	2	1	2	4
GLADES	0	0	0	0	0	ST. JOHNS	2	3	3	5	8
GULF	0	0	0	0	0	ST. LUCIE	11	7	2	5	6
HAMILTON	0	0	0	0	0	SANTA ROSA	1	3	2	6	1
HARDEE	3	3	1	1	2	SARASOTA	11	5	3	8	6
HENDRY	3	1	0	1	2	SEMINOLE	8	5	7	8	5
HERNANDO	3	3	2	5	4	SUMTER	0	2	1	2	0
HIGHLANDS	5	0	2	3	2	SUWANNEE	1	2	2	0	0
HILLSBOROUGH	28	31	47	47	32	TAYLOR	1	1	1	0	0
HOLMES	0	0	0	0	0	UNION	0	0	2	0	0
INDIAN RIVER	3	2	2	8	1	VOLUSIA	17	16	14	15	20
JACKSON	0	2	1	2	1	WAKULLA	0	0	0	1	0
JEFFERSON	0	2	1	0	0	WALTON	2	0	2	0	0
LAFAYETTE	0	0	0	0	0	WASHINGTON	0	0	0	0	2
LAKE	10	3	8	10	3	STATEWIDE	576	546	530	502	482



2005-2009 Pedestrians Killed in Crashes by Age and Type of Actions

Age Group	Pedestrian Actions																						
	Cross Not At Intersection	%	Cross at Mid-Block Cross-walk	%	Cross at Intersection	%	Walk Along Road With Traffic	%	Walk Along Road Against Traffic	%	Work on Vehicle in Road	%	Work in Road	%	Stand or Play in Road	%	Stand in Pedestrian Island	%	All Other	%	Unknown	%	Total Killed
0-4	14	35	1	2.5	2	5	0	0	0	0	0	0	0	0	7	17.5	0	0	14	35	2	5	40
5-9	8	22.2	1	2.8	7	19.4	1	2.8	0	0	0	0	0	0	4	11.1	0	0	13	36.1	2	5.6	36
10-14	16	34	0	0	9	19.1	7	14.9	0	0	0	0	0	0	3	6.4	0	0	12	25.5	0	0	47
15-19	45	34	1	.75	24	18.1	15	11.4	1	.75	3	2.3	2	1.5	11	8.3	0	0	24	18.1	6	4.5	132
20-24	66	37.5	2	1.1	15	8.5	21	11.9	3	1.7	3	1.7	1	.57	12	6.8	0	0	45	25.6	8	4.5	176
25-34	133	44.2	2	.66	24	8	26	8.6	9	3	0	0	4	1.3	27	9	1	.33	59	19.6	16	5.3	301
35-44	203	46.6	6	1.4	43	10	32	7.4	11	2.5	2	.46	9	2	28	6.4	0	0	83	19	18	4.1	435
45-54	273	48.7	10	1.8	82	14.6	31	5.5	9	1.6	1	.18	2	.36	24	4.3	0	0	101	18	28	5	561
55-64	166	52.7	6	1.9	54	17.1	16	5.1	3	.95	2	.63	1	.32	9	2.8	0	0	53	16.8	5	1.6	315
65-74	110	51.9	5	2.3	48	22.6	7	3.3	1	.47	1	.47	1	.47	6	2.8	0	0	27	12.7	6	2.8	212
75-84	92	44.7	7	3.4	50	24.3	6	2.9	4	1.9	1	.48	1	.48	3	1.4	0	0	36	17.5	6	2.9	206
85-89	22	46.8	3	6.4	8	17	0	0	1	2.1	0	0	1	2.1	3	6.4	0	0	9	19.1	0	0	47
90+	7	30.4	2	8.7	9	39.1	0	0	0	0	0	0	0	0	0	0	0	0	4	17.4	1	4.3	23
N/A	43	40.6	2	1.9	18	17	8	7.5	4	3.8	0	0	1	.94	6	5.7	0	0	17	16	7	6.6	106
Total	1,198		48		393		170		46		13		23		143		1		497		105		2,637

Report Years: 2005-2009

